

# **VDI Coolant**

## VDI Tool Holders with High Pressure Coolant Channels VDI 内冷型



**01** VDI Shank

**02** Compression Structure  
Two Types, Standard Shim and Wedge Clamping

**03** External Cooling Outlet  
Adjustable, extra cooling tube can be added.

**04** Internal Cooling Slot  
A long coolant outlet slot for internal cooling, enables to adjust the tool's protrusion.

**05** Tool Holder Clamping Base  
Shim can be ordered separately, used for small size tool holder.

**01** 安装柄  
经久耐用，一柄两用

**02** 压紧结构  
常规压板和楔形压紧两种结构

**03** 球形可调式冷却液喷口  
外冷却出水孔可任意方向调节，可配套安装加长冷却管

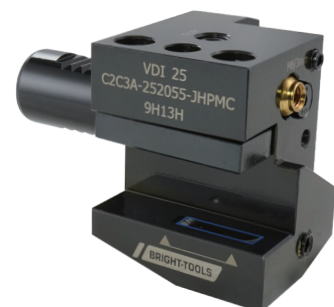
**04** 内冷槽  
可通过刀杆直接将冷却液输送至刀片

**05** 刀杆安装基面  
可加装垫片用于适应小一号刀杆



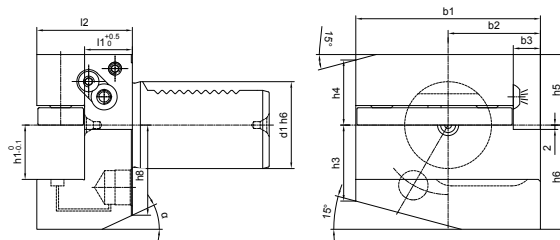
## VDI COOLANT TOOLING SYSTEM VDI COOLANT 工具系统

B1A Radial, Short, Coolant.....	I.38
短型横向右刀夹, 内冷型.....	I.38
B2A Radial, Short, Coolant.....	I.38
短型横向左刀夹, 内冷型.....	I.38
B3A Radial, Short, Coolant .....	I.39
短型横向反切右刀夹, 内冷型.....	I.39
B4A Radial, Short, Coolant .....	I.39
短型横向反切左刀夹, 内冷型.....	I.39
B1B4A Radial, Short, Coolant.....	I.40
短型横向右(反切左)刀夹, 内冷型.....	I.40
B1B4AK Radial, Short, Coolant, Wedge Clamping Holders.....	I.40
短型横向右(反切左)刀夹, 内冷型, 楔形压紧.....	I.40
B2B3A Radial, Short, Coolant.....	I.41
短型横向左(反切右)刀夹, 内冷型.....	I.41
B2B3AK Radial, Short, Coolant, Wedge Clamping Holders.....	I.41
短型横向左(反切右)刀夹, 内冷型, 楔形压紧.....	I.41
B5AK Radial, Long, Coolant, Wedge Clamping Holders .....	I.42
长型横向右刀夹, 内冷型, 楔形压紧.....	I.42
B6AK Radial, Long, Coolant, Wedge Clamping Holders .....	I.42
长型横向左刀夹, 内冷型, 楔形压紧.....	I.42
B7AK Radial, Long, Coolant, Wedge Clamping Holders .....	I.43
长型横向反切右刀夹, 内冷型, 楔形压紧.....	I.43
C1C4A Axial, Coolant.....	I.43
纵向右(反切左)刀夹, 内冷型.....	I.43
C1C4AK Axial, Coolant, Wedge Clamping Holders.....	I.44
纵向右(反切左)刀夹, 内冷型, 楔形压紧.....	I.44
C2C3A Axial, Coolant.....	I.44
纵向左(反切右)刀夹, 内冷型.....	I.44
C2C3AK Axial, Coolant, Wedge Clamping Holders.....	I.45
纵向左(反切右)刀夹, 内冷型, 楔形压紧.....	I.45
D1D2A Rectangular Holder, Coolant.....	I.45
多座刀夹, 内冷型.....	I.45
ARALU Cuting Off Tool Holder, Coolant.....	I.46
短型横向切刀右(反切左)刀夹, 内冷型.....	I.46
ALARU Cuting Off Tool Holder, Coolant.....	I.46
短型横向切刀左(反切右)刀夹, 内冷型.....	I.46



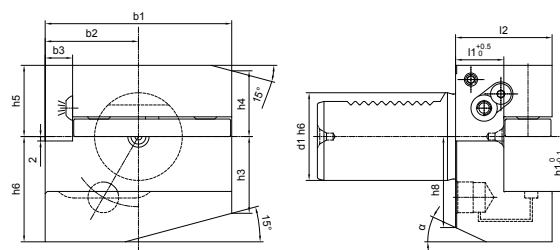
**VDI**

## B1A Radial, Short, Coolant 短型横向右刀夹, 内冷型



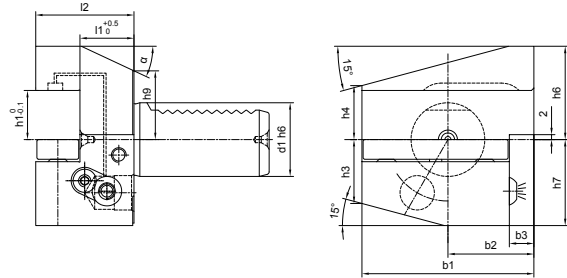
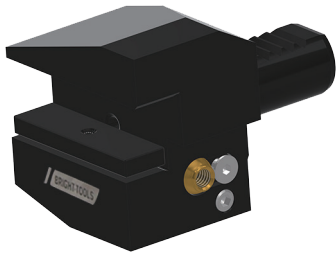
Size	b1	b2	b3	l1	h3	h4	h5	h6	h8	α
B1A-161234	42	23	5	23	15	15	20	22	19	30°
B1A-201640	55	30	7	26	19	19	25	30	23	30°
B1A-252040	70	35	10	22	26	22	28	38	30	25°
B1A-302040	70	35	10	22	26	22	28	38	30	25°
B1A-402544	85	42.5	12.5	22	35	30	32.5	48	43	30°
B1A-502544	85	42.5	12.5	22	43	30	32.5	48	43	30°

## B2A Radial, Short, Coolant 短型横向左刀夹, 内冷型

**VDI**


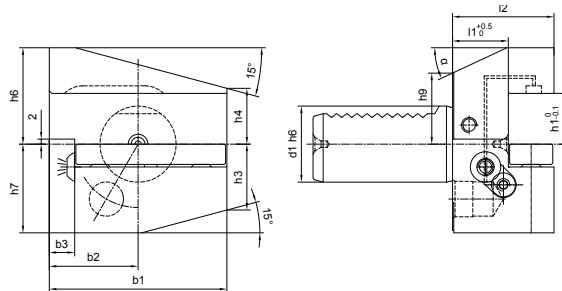
Size	b1	b2	b3	l1	h3	h4	h5	h6	h8	α
B2A-161234	42	23	5	23	15	15	20	22	19	30°
B2A-201640	55	30	7	26	19	19	25	30	23	30°
B2A-252040	70	35	10	22	29.5	22	28	38	30	25°
B2A-302040	70	35	10	22	26	22	28	38	30	25°
B2A-402544	85	42.5	12.5	22	35	30	32.5	48	43	30°
B2A-502544	85	42.5	12.5	22	35	30	32.5	48	43	30°

### B3A Radial, Short, Coolant 短型横向反切右刀夹, 内冷型



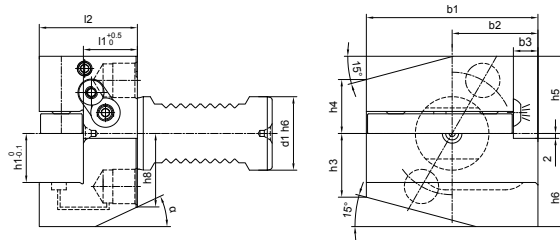
Size	b1	b2	b3	l1	h3	h4	h6	h7	h9	a
B3A-161234	42	23	5	23	15	15	22	20	19	30°
B3A-201640	55	30	7	26	19	19	30	25	23	30°
B3A-302040	70	35	10	22	26	22	38	35	28	25°
B3A-402544	85	42.5	12.5	22	35	30	48	42.5	43	30°
B3A-502544	85	42.5	12.5	22	35	30	48	42.5	43	30°

### B4A Radial, Short, Coolant 短型横向反切左刀夹, 内冷型



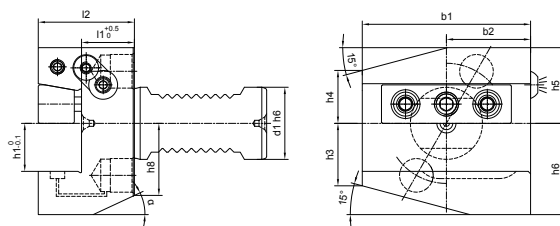
Size	b1	b2	b3	l1	h3	h4	h6	h7	h9	a
B4A-161234	42	23	5	23	15	15	22	20	19	30°
B4A-201640	55	30	7	26	19	19	30	25	23	30°
B4A-302040	70	35	10	22	26	22	38	35	28	25°
B4A-402544	85	42.5	12.5	22	35	30	48	42.5	43	30°
B4A-502544	85	42.5	12.5	22	35	30	48	42.5	43	30°

## B1B4A Radial, Short, Coolant 短型横向右 (反切左) 刀夹, 内冷型



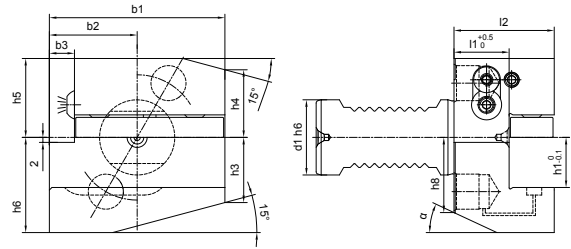
Size	b1	b2	b3	l1	h3	h4	h5	h6	h8	$\alpha$
B1B4A-302040	70	35	10	22	26	22	31.5	38	30	25°
B1B4A-402544	85	42.5	12.5	22	35	30	38	48	43	30°
B1B4A-502544	85	42.5	12.5	22	43	30	43	48	43	30°

## B1B4AK Radial, Short, Coolant, Wedge Clamping Holders 短型横向右 (反切左) 刀夹, 内冷型, 楔形压紧

**VDI**


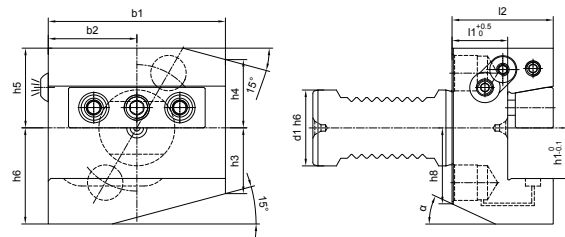
Size	b1	b2	b3	l1	h3	h4	h5	h6	h8	$\alpha$
B1B4AK-302040	70	35	-	22	26	22	31.5	38	30	25°
B1B4AK-402544	85	42.5	-	22	35	30	38	48	43	30°
B1B4AK-502544	85	42.5	-	22	43	30	43	48	43	30°

### B2B3A Radial, Short, Coolant 短型横向左 (反切右) 刀夹, 内冷型



Size	b1	b2	b3	l1	h3	h4	h5	h6	h8	$\alpha$
B2B3A-302040	70	35	10	22	26	27	31.5	38	30	25°
B2B3A-402544	85	42.5	12.5	22	35	30	38	48	43	30°
B2B3A-502544	85	42.5	12.5	22	35	38	43	48	43	30°

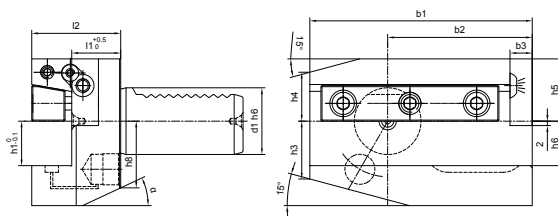
### B2B3AK Radial, Short, Coolant, Wedge Clamping Holders 短型横向左 (反切右) 刀夹, 内冷型, 楔形压紧



Size	b1	b2	b3	l1	h3	h4	h5	h6	h8	$\alpha$
B2B3AK-302040	70	35	-	22	26	27	31.5	38	30	25°
B2B3AK-402544	85	42.5	-	22	35	30	38	48	43	30°
B2B3AK-502544	85	42.5	-	22	35	38	43	48	43	30°

## B5AK Radial, Long, Coolant, Wedge Clamping Holders

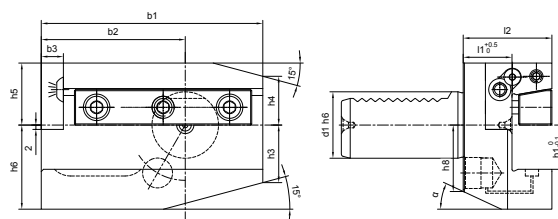
长型横向右刀夹, 内冷型, 楔形压紧



Size	b1	b2	b3	l1	h3	h4	h5	h6	h8	$\alpha$
B5AK-302040	100	65	10	22	26	22	28	38	30	25°
B5AK-402544	118	75.5	12.5	22	35	30	32.5	48	43	30°
B5AK-503255	130	80	16	30	42	35	35	60	55	30°
B5AK-603260	145	82.5	16	30	46	42.5	42.5	62.5	57	30°

## B6AK Radial, Long, Coolant, Wedge Clamping Holders

长型横向左刀夹, 内冷型, 楔形压紧

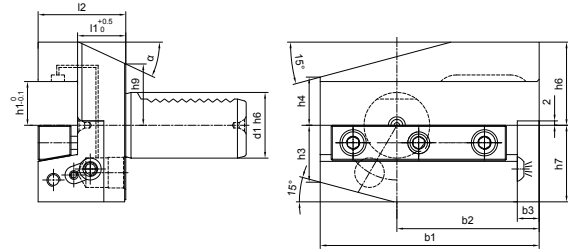


Size	b1	b2	b3	l1	h3	h4	h5	h6	h8	$\alpha$
B6AK-302040	100	65	10	22	26	22	28	38	30	25°
B6AK-402544	118	75.5	12.5	22	35	30	32.5	48	43	30°
B6AK-503255	130	80	16	30	42	35	35	60	55	30°
B6AK-603260	145	82.5	16	30	46	42.5	42.5	62.5	57	30°



## B7AK Radial, Long, Coolant, Wedge Clamping Holders

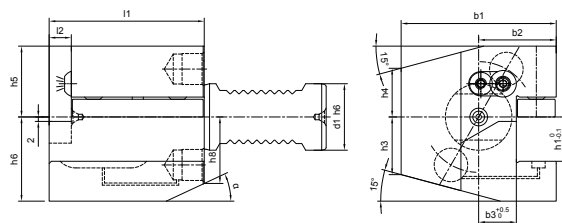
长型横向反切右刀夹, 内冷型, 楔形压紧



Size	b1	b2	b3	l1	h3	h4	h6	h7	h9	$\alpha$
B7AK-302040	100	65	10	22	26	22	38	35	28°	25°
B7AK-402544	118	75.5	12.5	22	35	30	48	42.5	43	30°
B7AK-503255	130	80	16	30	42	35	60	50	55	30°
B7AK-603260	145	82.5	16	30	46	42.5	62.5	62.5	57	30°

## C1C4A Axial, Coolant

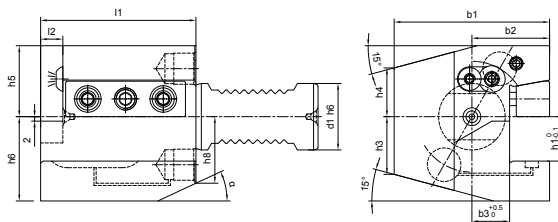
纵向右 (反切左) 刀夹, 内冷型



Size	b1	b2	b3	l2	h3	h4	h5	h6	h8	$\alpha$
C1C4A-161244	43	24	13	5	15	15	24	20	19	30°
C1C4A-201655	52	27	13	7	19	19	25	30	23	30°
C1C4A-252025	58	33	15	7	26	26	28	36	28	15°
C1C4A-302070	70	35	17	10	26	22	32	38	30	25°
C1C4A-402585	85	42.5	21	12.5	35	30	38	48	40	15°
C1C4A-502585	90.5	48	26	12.5	42	35	44	48	43	30°

## C1C4AK Axial, Coolant, Wedge Clamping Holders

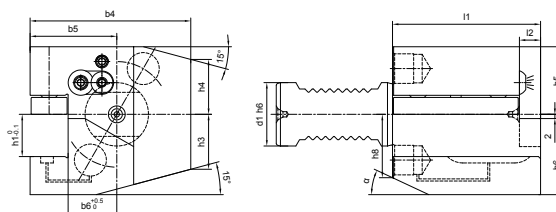
纵向右 (反切左) 刀夹, 内冷型, 楔形压紧



Size	b1	b2	b3	l2	h3	h4	h5	h6	h8	$\alpha$
C1C4AK-302070	70	35	17	10	26	22	32	38	30	25°
C1C4AK-402585	85	42.5	21	12.5	35	30	38	48	40	15°
C1C4AK-502585	90.5	48	26	12.5	42	35	44	48	43	30°

## C2C3A Axial, Coolant

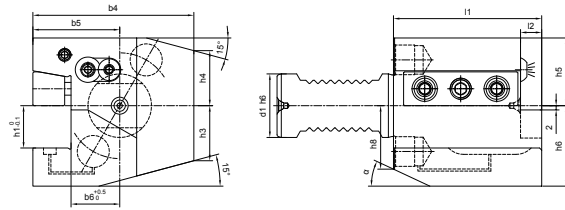
纵向左 (反切右) 刀夹, 内冷型



Size	b4	b5	b6	l2	h3	h4	h5	h6	h8	$\alpha$
C2C3A-161244	43	24	13	5	15	15	20	24	19	30°
C2C3A-201655	58	33	19	7	19	19	25	30	23	30°
C2C3A-252055	62	37	19	7	26	26	28	36	28	15°
C2C3A-302070	76	41	23	10	26	26	32	38	30	25°
C2C3A-402585	90	47.5	25.5	12.5	35	30	38	48	40	15°
C2C3A-502585	95	52.5	30.5	12.5	42	37	44	48	43	30°

## C2C3AK Axial, Coolant, Wedge Clamping Holders

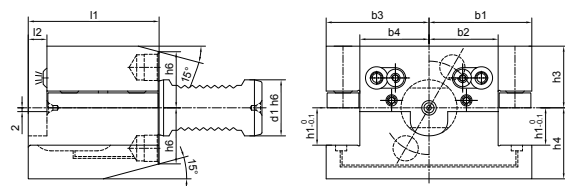
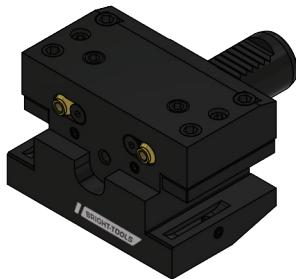
纵向左 (反切右) 刀夹, 内冷型, 楔形压紧



Size	b4	b5	b6	l2	h3	h4	h5	h6	h8	$\alpha$
C2C3AK-302070	76	41	23	10	26	26	32	38	30	25°
C2C3AK-402585	90	47.5	25.5	12.5	35	30	38	48	40	15°
C2C3AK-502585	95	52.5	30.5	12.5	42	37	44	48	43	30°

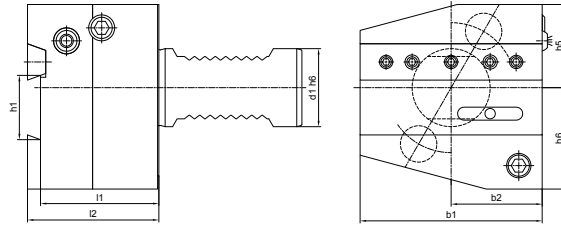
## D1D2A Rectangular Holder, Coolant

多座刀夹, 内冷型



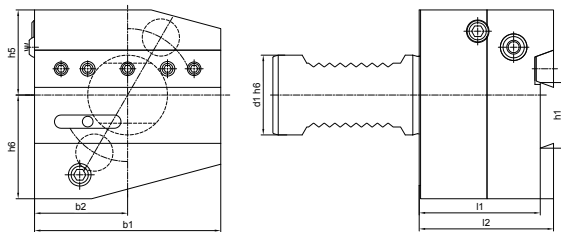
Size	b1	b2	b3	b4	h3	h4	h6	l2	$\alpha$
D1D2A-252055	37	19	37	19	28	38	28	7	15°
D1D2A-302070	55	37	55	37	33	38	30	10	15°
D1D2A-402585	65	43	65	43	43.5	48	37	12.5	15°

## ARALU Cutting Off Tool Holder, Coolant 短型横向切刀右 (反切左) 刀夹, 内冷型



Size	l1	l2	b1	b2	h5	h6
ARALUA-2526	44	50	60	30	28	36
ARALUA-3026	44	50	70	35	32	37
ARALUA-3032	44	50	85	42.5	32	40
ARALUA-4026	44	50	85	42.5	43	40
ARALUA-4032	44	50	85	42.5	43	40
ARALUA-5032	44	50	100	50	43	45

## ALARU Cutting Off Tool Holder, Coolant 短型横向切刀左 (反切右) 刀夹, 内冷型



Size	l1	l2	b1	b2	h5	h6
ALARUA-2526	44	50	60	30	28	36
ALARUA-3026	44	50	70	35	32	37
ALARUA-3032	44	50	85	42.5	32	40
ALARUA-4026	44	50	85	42.5	43	40
ALARUA-4032	44	50	85	42.5	43	40
ALARUA-5032	44	50	100	50	43	45