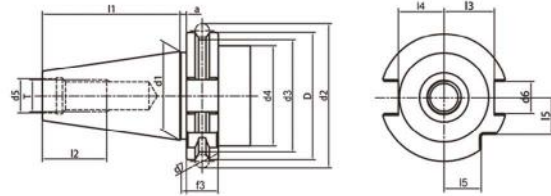
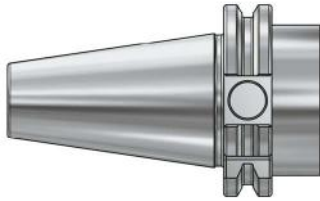


**TOOL HOLDERS**  
**DSK**  
**SK**

## SK Taper Standard SK 锥柄标准

DSK  
SK



Size	D	d1	d2	d3	d4	d5	d6	d7	l1	l2	l3	l4	l5	e1	e2
SK30	50	31.75	59.3	44.3	45	13	16.1	7	47.8	24	18.8	16.3	15	21	5
SK40	63.55	44.45	72.3	56.25	50	17	16.1	7	58.4	32	25	22.7	18.5	27	5
SK50	97.5	69.85	107.36	91.25	80	25	25.7	7	101.8	47	37.7	35.5	30	42	7

**Taper standard:** DIN 69871

**Material:** Alloyed case hardened steel

**Surface Treatment:** Blackening and Bright

**Taper tolerance:** <AT3

**Hardness:** HRC 58-62

**Carbon depth:** 0.8±0.2mm

**Surface Roughness:** Ra<0.005mm

**Balancing:** G6.3/15000; G2.5/25000

**Cooling:** AD; AD/B can be made by request.

## SK TOOLING SYSTEM

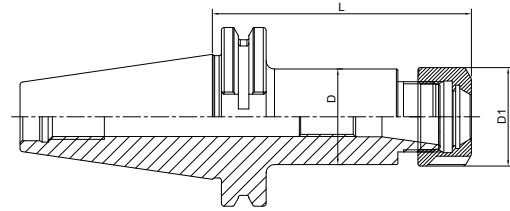
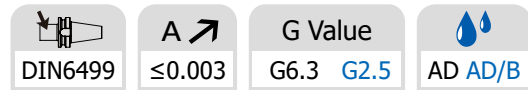
### SK 工具系统目录

ER Collet Chuck .....	B.04
ER弹簧夹头刀柄 .....	B.04
Power Milling Chuck .....	B.08
强力铣刀柄 .....	B.08
OZ Collet Chuck .....	B.10
OZ夹头刀柄 .....	B.10
SKS Collet Chuck .....	B.11
SKS高速筒夹刀柄 .....	B.11
Precision Screw Collet Chuck .....	B.12
NDC 后拉刀柄 .....	B.12
Face Mill Holder .....	B.15
面铣刀柄 .....	B.15
Combi Shell Mill Holder .....	B.17
混合插入式铣刀柄 .....	B.17
End Mill Holder .....	B.19
侧固刀柄 .....	B.19
Morse Taper Adapter .....	B.25
带扁尾莫氏刀柄 .....	B.25
Morse Taper Adapter .....	B.26
带螺纹孔莫氏刀柄 .....	B.26
Tool Holder Adapter Sleeve .....	B.27
转换刀柄 .....	B.27
Drill Chuck Adapter .....	B.30
钻接杆 .....	B.30
APU Drill Chuck Holder .....	B.31
APU 钻夹头刀柄 .....	B.31
Precision Drill Chuck Holder .....	B.32
精密钻夹头刀柄 .....	B.32
Quick Change Tapping Chuck .....	B.33
弹性快换攻丝刀柄 .....	B.33
Screw-in Milling Cutter Holder .....	B.34
SOM锁牙刀柄 .....	B.34
Runout Adjustable Flange Adapter .....	B.37
可调节精度法兰刀柄 .....	B.37
Adjustable Tool Holder .....	B.38
UM 调零刀柄 .....	B.38
Boring Bar Blank .....	B.39
基础柄 .....	B.39
Test Arbor .....	B.40
主轴检测棒 .....	B.40
Alignment Tool for ATC Arm .....	B.41
调整机械用手用组合模具 .....	B.41



## ER Collet Chuck with UM Nut

### ER 弹簧夹头刀柄



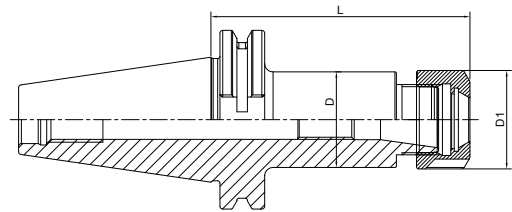
Size	D	D1	L	Capacity
SK30-ER16UM-70	28	32	70	1-10
SK30-ER20UM-70	34	35	70	1-13
SK30-ER25-70	32	42	70	2-16
SK30-ER32-70	40	50	70	2-20
SK30-ER40-70	50	63	70	3-26
SK30-ER16UM-100	28	32	100	1-10
SK30-ER20UM-100	34	35	100	1-13
SK30-ER25-100	42	42	100	2-16
SK30-ER32-100	50	50	100	2-20
SK40-ER16UM-63	28	32	63	1-10
SK40-ER20UM-70	34	35	70	1-13
SK40-ER25-70	42	42	70	2-16
SK40-ER32-70	40	50	70	2-20
SK40-ER40-80	63	63	80	3-26
SK40-ER16UM-100	28	32	100	1-10
SK40-ER20UM-100	34	35	100	1-13
SK40-ER25-100	42	42	100	2-16
SK40-ER32-100	50	50	100	2-20
SK40-ER40-100	63	63	100	3-26
SK40-ER40-120	63	63	120	3-26
SK40-ER16UM-160	28	32	160	1-10
SK40-ER20UM-160	34	35	160	1-13
SK40-ER25-160	42	42	160	2-16
SK40-ER32-160	50	50	160	2-20
SK40-ER40-160	63	63	160	3-26
SK40-ER16UM-200	28	32	200	1-10
SK40-ER20UM-200	34	35	200	1-13
SK40-ER25-200	42	42	200	2-16
SK40-ER32-200	50	50	200	2-20
SK40-ER40-200	50	63	200	3-26



**ER Collet Chuck with UM Nut**  
**ER 弹簧夹头刀柄**



DIN6499	A ↗ ≤0.003	G Value G6.3 G2.5	AD AD/B
---------	------------	-------------------	---------



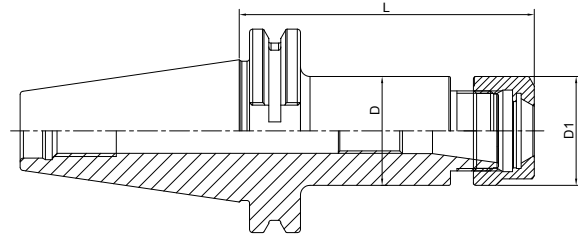
DSK  
SK

Size	D	D1	L	Capacity
SK50-ER16UM-70	28	32	70	1-10
SK50-ER20UM-70	34	35	70	1-13
SK50-ER25-60	42	42	60	2-16
SK50-ER32-70	50	50	70	2-20
SK50-ER40-80	63	63	80	3-26
SK50-ER50-100	100	78	100	6-34
SK50-ER16UM-100	28	32	100	1-10
SK50-ER20UM-100	34	35	100	1-13
SK50-ER25-100	42	42	100	2-16
SK50-ER32-100	50	50	100	2-20
SK50-ER40-100	63	63	100	3-26
SK50-ER16UM-160	28	32	160	1-10
SK50-ER20UM-160	34	35	160	1-13
SK50-ER25-160	42	42	160	2-16
SK50-ER32-160	50	50	160	2-20
SK50-ER40-160	63	63	160	3-26
SK50-ER16UM-200	28	32	200	1-10
SK50-ER20UM-200	34	35	200	1-13
SK50-ER25-200	42	42	200	2-16
SK50-ER32-200	50	50	200	2-20
SK50-ER40-200	63	63	200	3-26



## ER Collet Chuck with Hex Nut

### ER 弹簧夹头刀柄



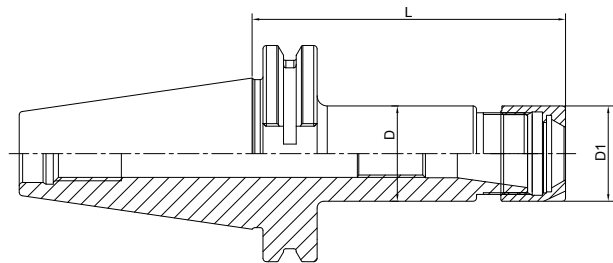
Size	D	D1	L	Capacity
SK30-ER16A-70	28	28	70	1-10
SK30-ER20A-70	34	34	70	1-13
SK30-ER16A-100	28	28	100	1-10
SK30-ER20A-100	34	34	100	1-13
SK40-ER16A-63	28	28	63	1-10
SK40-ER20A-70	34	34	70	1-13
SK40-ER16A-100	28	28	100	1-10
SK40-ER20A-100	34	34	100	1-13
SK40-ER16A-160T	28	28	160	1-10
SK40-ER20A-160	34	34	160	1-13
SK40-ER16A-200T	28	28	200	1-10
SK40-ER20A-200	34	34	200	1-13
SK50-ER16A-70	28	28	70	1-10
SK50-ER20A-70	34	34	70	1-13
SK50-ER16A-100	28	28	100	1-10
SK50-ER20A-100	34	34	100	1-13
SK50-ER16A-160T	28	28	160	1-10
SK50-ER20A-160	34	34	160	1-13
SK50-ER16A-200T	28	28	200	1-10
SK50-ER20A-200	34	34	200	1-13

T refers to cutter side with taper design  
 T 代表刀具端锥柄设计



## ER Collet Chuck with Mini Nut ER 弹簧夹头刀柄

DIN6499	A $\leq 0.003$	G Value G6.3 G2.5	AD AD/B
---------	----------------	----------------------	---------



Size	D	D1	L	Capacity
SK40-ER11M-70	16	16	70	1-7
SK40-ER16M-70	22	22	70	1-10
SK40-ER20M-70	28	28	70	1-13
SK40-ER25M-70	35	35	70	2-16
SK40-ER11M-100	16	16	100	1-7
SK40-ER16M-100	22	22	100	1-10
SK40-ER20M-100	28	28	100	1-13
SK40-ER25M-100	35	35	100	2-16
SK40-ER11M-160T	16	16	160	1-7
SK40-ER16M-160T	22	22	160	1-10
SK40-ER20M-160	28	28	160	1-13
SK40-ER25M-160	35	35	160	2-16
SK50-ER16M-70	22	22	70	1-10
SK50-ER20M-70	28	28	70	1-13
SK50-ER25M-70	35	35	70	2-16
SK50-ER16M-100	22	22	100	1-10
SK50-ER20M-100	28	28	100	1-13
SK50-ER25M-100	35	35	100	2-16
SK50-ER16M-160T	22	22	160	1-10
SK50-ER20M-160	28	28	160	1-13
SK50-ER25M-160	35	35	160	2-16

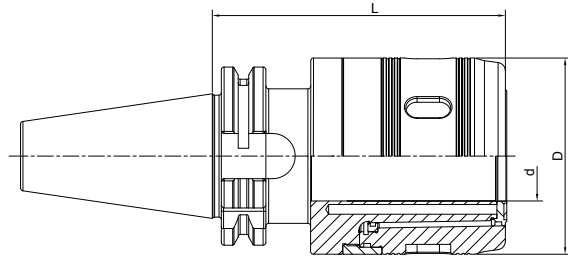
T refers to cutter side with taper design  
T 代表刀具端锥柄设计



## Power Milling Chuck 强力铣刀柄

 A ↗  
 ≤0.008

 G Value  
 G6.3

  
 AD


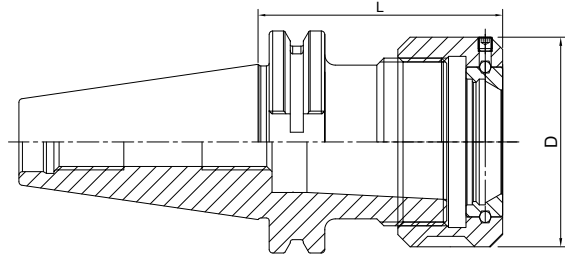
Size	d	D	L	Capacity
SK30-HC20-85	20	50	85	3-16; 20
SK30-HC20-100	20	50	100	3-16; 20
SK40-HC20-85	20	50	85	3-16; 20
SK40-HC25-100	25	59	100	3-20; 25
SK40-HC32-105	32	72	105	3-25; 32
SK50-HC20-105	20	50	105	3-16; 20
SK50-HC25-100	25	59	100	3-20; 25
SK50-HC32-110	32	72	110	3-25; 32
SK50-HC42-110	42	99	110	3-32; 42





**OZ Collet Chuck**  
**OZ 夹头刀柄**

DIN6391	A $\leq 0.005$	G Value G6.3	AD AD/B
---------	----------------	--------------	---------

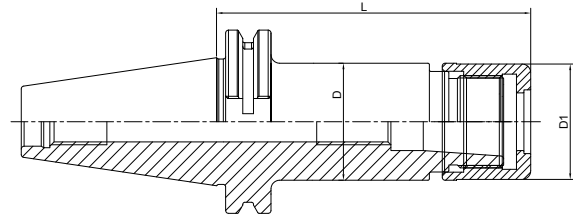


Size	D	L	Capacity
SK40-OZ16-70	43	70	2-16
SK40-OZ25-70	60	70	2-25
SK40-OZ32-90	72	90	4-32
SK40-OZ16-100	43	100	2-16
SK40-OZ25-100	60	100	2-25
SK50-OZ25-70	60	70	2-25
SK50-OZ32-80	72	80	4-32



## High Speed SKS Collet Chuck SKS 高速筒夹刀柄

A ↗ ≤0.003	G Value G2.5 G6.3	AD
---------------	----------------------	----



Size	D	D1	L	Capacity	M
SK40-SKS10-60	27.5	27.1	60	2-10	M21.5*1
SK40-SKS16-60	40.6	40	60	3-16	M32*1.5
SK40-SKS10-90	27.5	27.1	90	2-10	M21.5*1
SK40-SKS16-90	40.6	40	90	3-16	M32*1.5
SK40-SKS10-120	27.5	27.1	120	2-10	M21.5*1
SK40-SKS16-120	40.6	40	120	3-16	M32*1.5
SK50-SKS10-105	27.5	27.1	105	2-10	M21.5*1
SK50-SKS16-105	40.6	40	105	3-16	M32*1.5
SK50-SKS10-135	27.5	27.1	135	2-10	M21.5*1
SK50-SKS16-135	40.6	40	135	3-16	M32*1.5
SK50-SKS10-165	27.5	27.1	165	2-10	M21.5*1
SK50-SKS16-165	40.6	40	165	3-16	M32*1.5

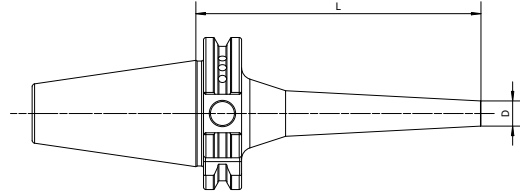


## Precision Screw Collet Chuck NDC 后拉刀柄

 A ↗  
 ≤0.003

 G Value  
 G6.3

AD

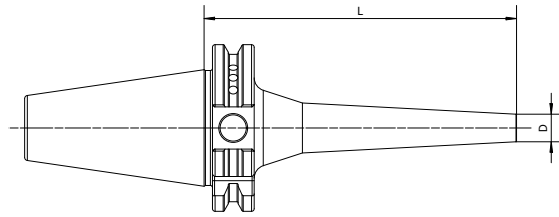


Size	L	L1	D	D1	Capacity
SK40-NDC20-83	83	20	50	40	3-20
SK40-NDC20-112	112	45	50	40	3-20
SK50-NDC20-83	83	18	63	40	3-20
SK50-NDC20-112	112	45	63	40	3-20
SK50-NDC25-130	130	-	70	52.5	16-32



**Pull Back Collet Chuck**  
**DC 后拉刀柄**

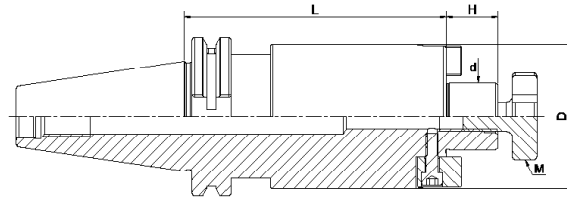
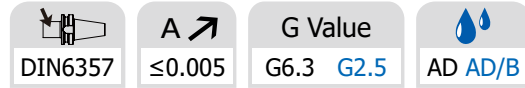
A ↗ ≤0.003	G Value G6.3	AD
---------------	-----------------	----



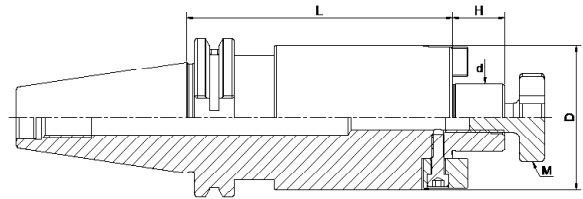
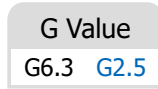
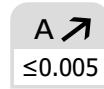
Size	D	L	Capacity
SK30-DC06-60	14	60	1-6
SK30-DC06-90	14	90	1-6
SK30-DC06-120	14	120	1-6
SK30-DC08-60	22	60	1-10
SK30-DC08-90	22	90	1-10
SK30-DC08-120	22	120	1-10
SK30-DC12-80	34	80	1-12
SK40-DC06-60	14	60	1-6
SK40-DC06-90	14	90	1-6
SK40-DC06-120	14	120	1-6
SK40-DC06-150	14	150	1-6
SK40-DC08-60	22	60	1-10
SK40-DC08-90	22	90	1-10
SK40-DC08-120	22	120	1-10
SK40-DC08-150	22	150	1-10
SK40-DC08-200	22	200	1-10
SK40-DC12-90	34	90	1-12
SK40-DC12-120	34	120	1-12
SK40-DC12-150	34	150	1-12
SK40-DC12-200	34	200	1-12
SK50-DC06-110	14	110	1-6
SK50-DC06-150	14	150	1-6
SK50-DC08-110	22	110	1-10
SK50-DC08-150	22	150	1-10
SK50-DC08-200	22	200	1-10
SK50-DC12-120	34	120	1-12
SK50-DC12-150	34	150	1-12
SK50-DC12-200	34	200	1-12



## Face Mill Holder 面铣刀柄

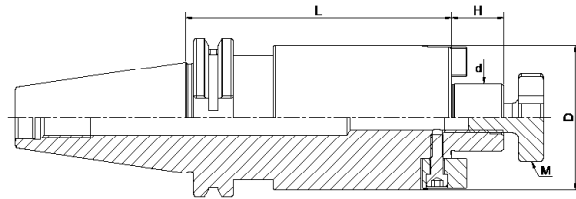
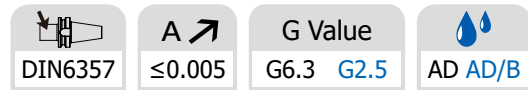


Size	d	D	L	H	M
SK30-FMB16-40	16	38	40	17	M8
SK30-FMB22-40	22	48	40	19	M10
SK30-FMB27-50	27	58	50	21	M12
SK30-FMB32-50	32	78	50	24	M16

**Face Mill Holder**  
**面铣刀柄**


Size	d	D	L	H	M
SK40-FMB16-35	16	38	35	17	M8
SK40-FMB22-35	22	48	35	19	M10
SK40-FMB27-40	27	58	40	21	M12
SK40-FMB32-50	32	78	50	24	M16
SK40-FMB40-50	40	88	50	27	M20
SK40-FMB16-100	16	38	100	17	M8
SK40-FMB22-100	22	48	100	19	M10
SK40-FMB27-100	27	58	100	21	M12
SK40-FMB32-100	32	78	100	24	M16
SK40-FMB40-100	40	88	100	27	M20
SK40-FMB16-160	16	38	160	17	M8
SK40-FMB22-160	22	48	160	19	M10
SK40-FMB27-160	27	58	160	21	M12
SK40-FMB32-160	32	78	160	24	M16
SK40-FMB40-160	40	88	160	27	M20
SK40-FMB16-200	16	38	200	17	M8
SK40-FMB22-200	22	48	200	19	M10
SK40-FMB27-200	27	58	200	21	M12
SK40-FMB32-200	32	78	200	24	M16
SK40-FMB40-200	40	88	200	27	M20
SK40-FMB22-250	22	48	250	19	M10
SK40-FMB27-250	27	58	250	21	M12
SK40-FMB32-250	32	78	250	24	M16
SK40-FMB40-250	40	88	250	27	M20
SK40-FMB22-300	22	48	300	19	M10
SK40-FMB27-300	27	58	300	21	M12
SK40-FMB32-300	32	78	300	24	M16
SK40-FMB40-300	40	88	300	27	M20



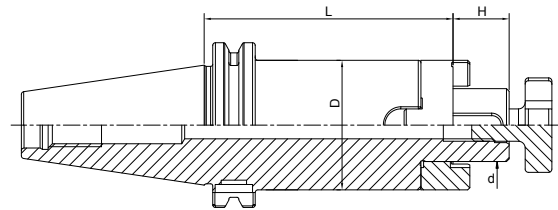
**Face Mill Holder**  
**面铣刀柄**


Size	d	D	L	H	M
SK50-FMB16-35	16	38	35	17	M8
SK50-FMB22-35	22	48	35	19	M10
SK50-FMB27-40	27	58	40	21	M12
SK50-FMB32-50	32	78	50	24	M16
SK50-FMB40-50	40	88	50	27	M20
SK50-FMB16-100	16	38	100	17	M8
SK50-FMB22-100	22	48	100	19	M10
SK50-FMB27-100	27	58	100	21	M12
SK50-FMB32-100	32	78	100	24	M16
SK50-FMB40-100	40	88	100	27	M20
SK50-FMB16-160	16	38	160	17	M8
SK50-FMB22-160	22	48	160	19	M10
SK50-FMB27-160	27	58	160	21	M12
SK50-FMB32-160	32	78	160	24	M16
SK50-FMB40-160	40	88	160	27	M20
SK50-FMB16-200	16	38	200	17	M8
SK50-FMB22-200	22	48	200	19	M10
SK50-FMB27-200	27	58	200	21	M12
SK50-FMB32-200	32	78	200	24	M16
SK50-FMB40-200	40	88	200	27	M20
SK50-FMB22-250	22	48	250	19	M10
SK50-FMB27-250	27	58	250	21	M12
SK50-FMB32-250	32	78	250	24	M16
SK50-FMB40-250	40	88	250	27	M20
SK50-FMB22-300	22	48	300	19	M10
SK50-FMB27-300	27	58	300	21	M12
SK50-FMB32-300	32	78	300	24	M16
SK50-FMB40-300	40	88	300	27	M20



**Combi Shell Mill Holder**  
混合插入式铣刀柄

DIN6358	A $\leq 0.005$	G Value G6.3	AD AD/B
---------	----------------	--------------	---------



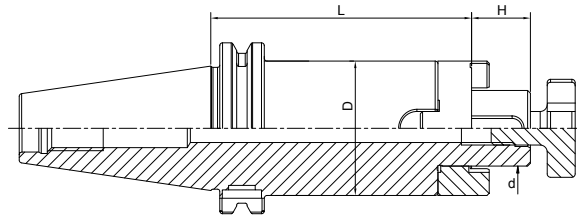
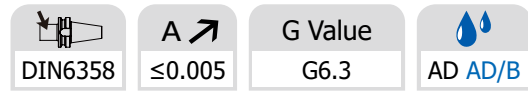
Size	d	D	l	L
SK30-SEMC16-50	16	32	17	50
SK30-SEMC22-50	22	40	19	50
SK30-SEMC27-55	27	48	21	55
SK30-SEMC32-60	32	58	24	60
SK40-SEMC16-55	16	32	17	55
SK40-SEMC22-55	22	40	19	55
SK40-SEMC27-55	27	48	21	55
SK40-SEMC32-60	32	58	24	60
SK40-SEMC40-60	40	70	27	60
SK40-SEMC16-100	16	32	17	100
SK40-SEMC22-100	22	40	19	100
SK40-SEMC27-100	27	48	21	100
SK40-SEMC32-100	32	58	24	100
SK40-SEMC40-100	40	70	27	100
SK40-SEMC16-160	16	32	17	160
SK40-SEMC22-160	22	40	19	160
SK40-SEMC27-160	27	48	21	160
SK40-SEMC32-160	32	58	24	160
SK40-SEMC40-160	40	70	27	160

DSK  
SK





## Combi Shell Mill Holder 混合插入式铣刀柄

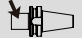



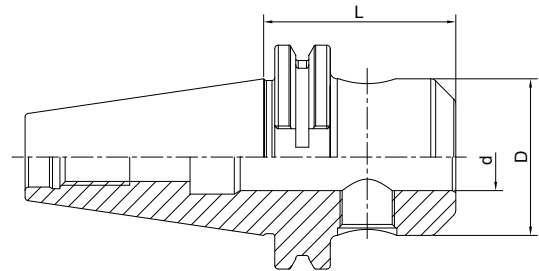
Size	d	D	l	L
SK50-SEMC16-55	16	32	17	55
SK50-SEMC22-55	22	40	19	55
SK50-SEMC27-55	27	48	21	55
SK50-SEMC32-55	32	58	24	60
SK50-SEMC40-55	40	70	27	60
SK50-SEMC16-100	16	32	17	100
SK50-SEMC22-100	22	40	19	100
SK50-SEMC27-100	27	48	21	100
SK50-SEMC32-100	32	58	24	100
SK50-SEMC40-100	40	70	27	100
SK50-SEMC16-160	16	32	17	160
SK50-SEMC22-160	22	40	19	160
SK50-SEMC27-160	27	48	21	160
SK50-SEMC32-160	32	58	24	160
SK50-SEMC40-160	40	70	27	160



**End Mill Holder Weldon**  
**侧固刀柄**



 DIN6359/1835B	<b>A</b> ↗ ≤0.005	<b>G Value</b> G6.3 G2.5	 AD AD/B
--	----------------------	-----------------------------	--

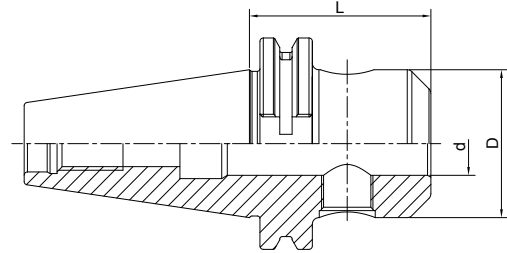


Size	d	D	L
SK30-SLA06-50	6	25	50
SK30-SLA08-50	8	28	50
SK30-SLA10-50	10	35	50
SK30-SLA12-50	12	42	50
SK30-SLA14-63	14	44	63
SK30-SLA16-63	16	48	63
SK30-SLA18-63	18	50	63
SK30-SLA20-70	20	52	70



## End Mill Holder Weldon 侧固刀柄

DIN6359/1835B	A ↗ ≤0.005	G Value G6.3 G2.5	AD AD/B
---------------	------------	-------------------	---------

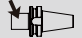
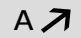
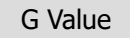



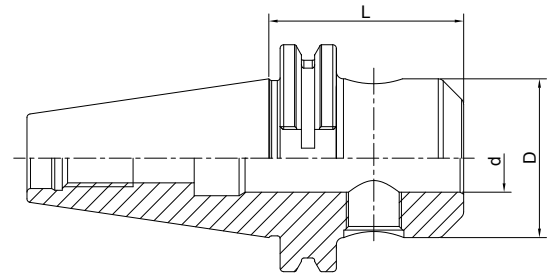
Size	d	D	L
SK40-SLA06-50	6	25	50
SK40-SLA08-50	8	28	50
SK40-SLA10-50	10	35	50
SK40-SLA12-50	12	42	50
SK40-SLA14-50	14	44	50
SK40-SLA16-63	16	48	63
SK40-SLA18-63	18	50	63
SK40-SLA20-63	20	52	63
SK40-SLA25-100	25	65	100
SK40-SLA32-100	32	72	100
SK40-SLA40-120	40	80	120
SK40-SLA06-100	6	25	100
SK40-SLA08-100	8	28	100
SK40-SLA10-100	10	35	100
SK40-SLA12-100	12	42	100
SK40-SLA14-100	14	44	100
SK40-SLA16-100	16	48	100
SK40-SLA18-100	18	50	100
SK40-SLA20-100	20	52	100
SK40-SLA06-160	6	25	160
SK40-SLA08-160	8	28	160
SK40-SLA10-160	10	35	160
SK40-SLA12-160	12	42	160
SK40-SLA14-160	14	44	160
SK40-SLA16-160	16	48	160
SK40-SLA18-160	18	50	160
SK40-SLA20-160	20	52	160
SK40-SLA25-160	25	65	160
SK40-SLA32-160	32	72	160
SK40-SLA40-160	40	80	160



**End Mill Holder Weldon**  
**侧固刀柄**



 DIN6359/1835B	 A $\nearrow$ $\leq 0.005$	 G Value G6.3 G2.5	 AD AD/B
--	---	---	--

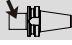



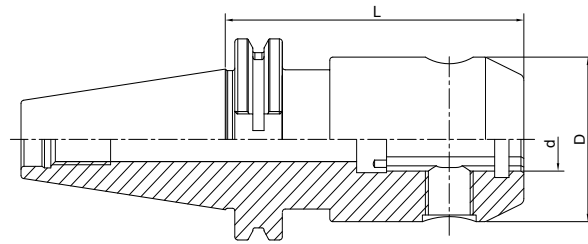
Size	d	D	L
SK50-SLA06-63	6	25	63
SK50-SLA08-63	8	28	63
SK50-SLA10-63	10	35	63
SK50-SLA12-63	12	42	63
SK50-SLA14-63	14	44	63
SK50-SLA16-63	16	48	63
SK50-SLA18-63	18	50	63
SK50-SLA20-63	20	52	63
SK50-SLA25-80	25	65	80
SK50-SLA32-100	32	72	100
SK50-SLA40-100	40	80	100
SK50-SLA50-120	50	100	120
SK50-SLA06-100	6	25	100
SK50-SLA08-100	8	28	100
SK50-SLA10-100	10	35	100
SK50-SLA12-100	12	42	100
SK50-SLA14-100	14	44	100
SK50-SLA16-100	16	48	100
SK50-SLA18-100	18	50	100
SK50-SLA20-100	20	52	100
SK50-SLA25-120	25	65	120
SK50-SLA06-160	6	25	160
SK50-SLA08-160	8	28	160
SK50-SLA10-160	10	35	160
SK50-SLA12-160	12	42	160
SK50-SLA14-160	14	44	160
SK50-SLA16-160	16	48	160
SK50-SLA18-160	18	50	160
SK50-SLA20-160	20	52	160
SK50-SLA25-160	25	65	160
SK50-SLA32-160	32	72	160
SK50-SLA40-160	40	80	160

DSK  
SK



## End Mill Holder with Coolant Channels 侧固刀柄, 端面出水型

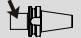



 DIN6359/1835B	<b>A</b> ↗ ≤0.005	<b>G Value</b> G6.3 G2.5	 AD AD/B
--	----------------------	-----------------------------	--

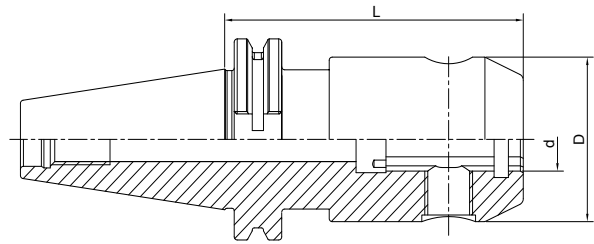


Size	d	D	L
SK40-SLA06-50K	6	25	50
SK40-SLA08-50K	8	28	50
SK40-SLA10-50K	10	35	50
SK40-SLA12-50K	12	42	50
SK40-SLA14-50K	14	44	50
SK40-SLA16-63K	16	48	63
SK40-SLA18-63K	18	50	63
SK40-SLA20-63K	20	52	63
SK40-SLA25-100K	25	65	100
SK40-SLA32-100K	32	72	100
SK40-SLA40-120K	40	80	120
SK40-SLA06-100K	6	25	100
SK40-SLA08-100K	8	28	100
SK40-SLA10-100K	10	35	100
SK40-SLA12-100K	12	42	100
SK40-SLA14-100K	14	44	100
SK40-SLA16-100K	16	48	100
SK40-SLA18-100K	18	50	100
SK40-SLA20-100K	20	52	100



**End Mill Holder with Coolant Channels**  
**侧固刀柄，端面出水型**

 DIN6359/1835B	 A $\nearrow$ $\leq 0.005$	 G Value G6.3 G2.5	 AD AD/B
--	---	---	--

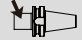



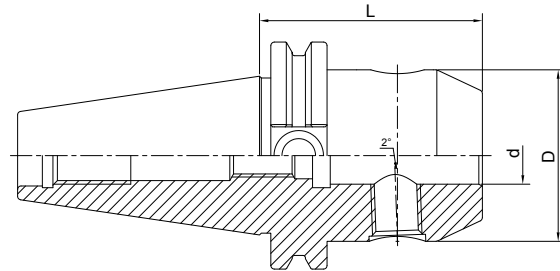
Size	d	D	L
SK50-SLA06-63K	6	25	63
SK50-SLA08-63K	8	28	63
SK50-SLA10-63K	10	35	63
SK50-SLA12-63K	12	42	63
SK50-SLA16-63K	16	48	63
SK50-SLA18-63K	18	50	63
SK50-SLA20-63K	20	52	63
SK50-SLA25-80K	25	65	80
SK50-SLA32-100K	32	72	100
SK50-SLA40-100K	40	80	100
SK50-SLA06-100K	6	25	100
SK50-SLA08-100K	8	28	100
SK50-SLA10-100K	10	35	100
SK50-SLA12-100K	12	42	100
SK50-SLA14-100K	14	44	100
SK50-SLA16-100K	16	48	100
SK50-SLA18-100K	18	50	100
SK50-SLA20-100K	20	52	100
SK50-SLA25-120K	25	65	120

DSK  
SK

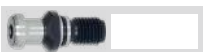


## End Mill Holder Whistle Notch 侧固式铣刀柄，斜 2 度

 DIN6359/1835B	<b>A</b> ↗ ≤0.005	<b>G Value</b> G6.3 G2.5	 AD AD/B
--	----------------------	-----------------------------	--



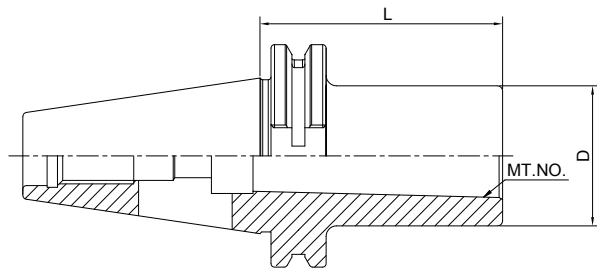
Size	d	D	L
SK40-SLB06-50	6	25	50
SK40-SLB08-50	8	28	50
SK40-SLB10-50	10	35	50
SK40-SLB12-50	12	42	50
SK40-SLB14-50	14	44	50
SK40-SLB16-63	16	48	63
SK40-SLB18-63	18	50	63
SK40-SLB20-63	20	52	63
SK40-SLB25-100	25	65	100
SK40-SLB32-100	32	72	100
SK40-SLB40-120	40	80	120
SK50-SLB06-63	6	25	63
SK50-SLB08-63	8	28	63
SK50-SLB10-63	10	35	63
SK50-SLB12-63	12	42	63
SK50-SLB14-63	14	44	63
SK50-SLB16-63	16	48	63
SK50-SLB18-63	18	50	63
SK50-SLB20-63	20	52	63
SK50-SLB25-80	25	65	80
SK50-SLB32-100	32	72	100
SK50-SLB40-100	40	80	100
SK50-SLB50-125	50	100	125



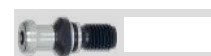
**Morse Taper Adapter with Tang**  
**带扁尾莫氏刀柄**



DIN6383	A $\leq 0.005$	G Value G6.3	AD
---------	----------------	--------------	----



Size	MT. NO.	D	L
SK30-MTA1-50	1	25	50
SK30-MTA2-65	2	32	65
SK30-MTA3-80	3	40	80
SK40-MTA1-50	1	25	50
SK40-MTA2-50	2	32	50
SK40-MTA3-70	3	40	70
SK40-MTA4-95	4	48	95
SK50-MTA1-45	1	25	45
SK50-MTA2-60	2	32	60
SK50-MTA3-65	3	40	65
SK50-MTA4-95	4	48	95
SK50-MTA5-105	5	63	105





## Morse Taper Adapter with Drawbar

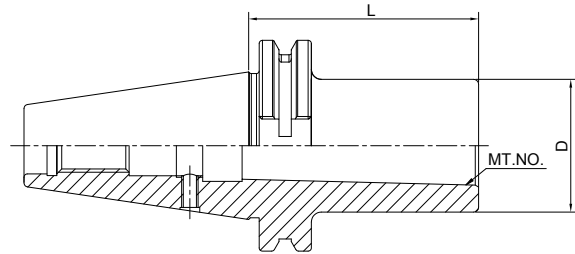
### 带螺纹孔莫氏刀柄

DIN6364

 A  $\leq 0.005$ 


 G Value  
G6.3

A



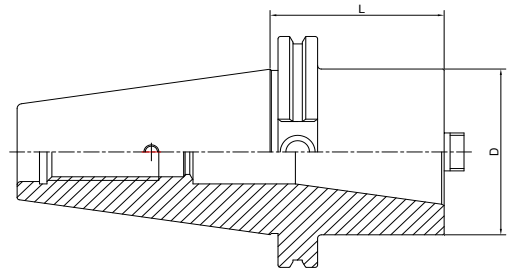
Size	MT. NO.	D	L
SK40-MTB1-50	1	25	50
SK40-MTB2-50	2	32	50
SK40-MTB3-70	3	40	70
SK40-MTB4-95	4	48	95
SK50-MTB1-45	1	25	45
SK50-MTB2-60	2	32	60
SK50-MTB3-65	3	40	65
SK50-MTB4-70	4	48	70
SK50-MTB5-100	5	63	100



**Tool Holder Adatper Sleeve**  
**转换刀柄**



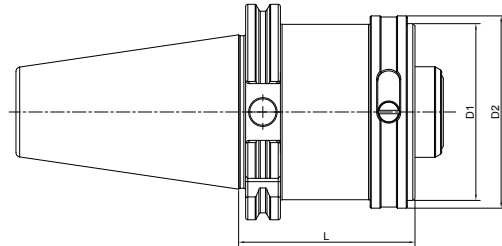
A ↗ ≤0.005	G Value G6.3	💧 A
---------------	-----------------	--------



Size	L	D
SK40-SK30-50	50	50
SK40-SK40-100	100	63
SK50-SK40-70	70	70
SK50-SK50-120	120	97



**Tool Holder Adatper Sleeve**  
**转换刀柄**

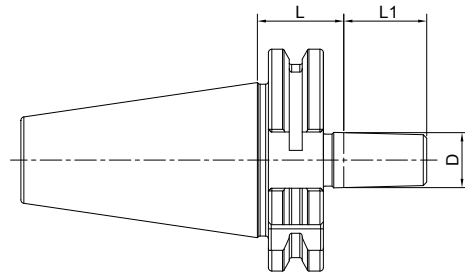


Size	D1	D2	L
SK30-HSK32C-40	32	37	40
SK30-HSK40C-60	40	45	60
SK40-HSK32C-40	32	37	40
SK40-HSK40C-40	40	45	40
SK40-HSK50C-60	50	55	60
SK40-HSK63C-75	63	70	75
SK50-HSK32C-40	32	37	40
SK50-HSK40C-40	40	45	40
SK50-HSK50C-40	50	55	40
SK50-HSK63C-40	63	70	40
SK50-HSK80C-80	80	87	80
SK50-HSK100C-95	100	110	95



## Drill Chuck Adapter 钻接杆

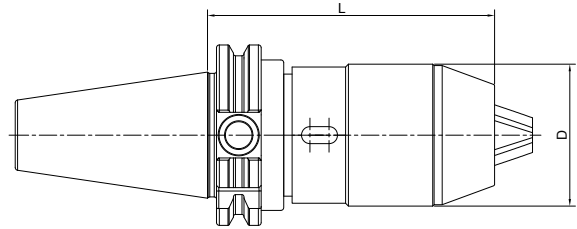
DIN238	A $\nearrow$ $\leq 0.005$	G Value G6.3	A
--------	------------------------------	-----------------	---



Size	D	L1	L
SK30-B12	B12	18.5	25
SK30-B16	B16	24	25
SK40-B12	B12	18.5	25
SK40-B16	B16	24	25
SK40-B18	B18	32	25
SK50-B12	B12	18.5	25
SK50-B16	B16	24	25
SK50-B18	B18	32	25



**APU Drill Chuck Holder**  
**APU 钻夹头刀柄**



Size	D	L	Capacity
SK30-APU8-80	38	80	1-8
SK30-APU13-120	48	120	1-13
SK30-APU16-130	53	130	3-16
SK40-APU08-85	38	85	1-8
SK40-APU13-100	48	100	1-13
SK40-APU16-110	53	110	3-16
SK50-APU8-75	38	75	1-8
SK50-APU13-100	48	100	1-13
SK50-APU16-100	53	100	3-16

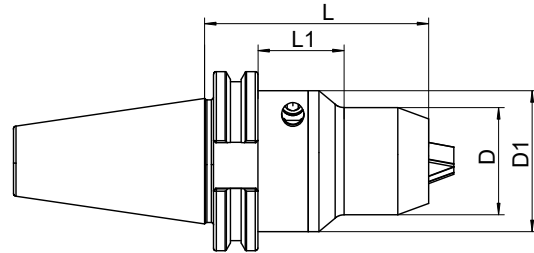


## Precision Drill Chuck Holder

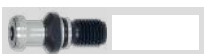
### 精密钻夹头刀柄

 A ↗  
 ≤0.03

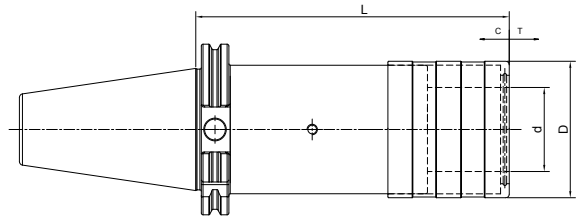
 G Value  
 G6.3

  
 AD


Size	D	D1	L	L1	Capacity
SK40-CPU10-80	38	50	80	28.9	1-10
SK40-CPU13-90	50	-	90	-	1-13
SK40-CPU16-90	50	-	90	-	1-16
SK50-CPU13-100	50	-	100	-	1-13
SK50-CPU16-100	50	-	100	-	1-16



## Quick Change Tapping Chuck with Length Compensation 弹性快换攻丝刀柄



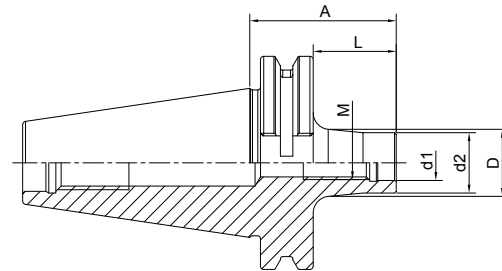
Size	D	d	L	T	C
SK30-TC312-65	36	19	65	7.5	7.5
SK30-TC820-99	54	31	99	12.5	12.5
SK40-TC312-59	36	19	59	7.5	7.5
SK40-TC820-97	54	31	97	12.5	12.5
SK40-TC1433-156	78	48	156	22	22
SK50-TC312-63	36	19	63	7.5	7.5
SK50-TC820-97	54	31	97	12.5	12.5
SK50-TC1433-140	78	48	140	22	22



## Screw-in Milling Cutter Holder

### 锁牙刀柄, 锥柄型

<b>A</b> ↗ ≤0.005	<b>G Value</b> G6.3	<b>AD AD/B</b>
----------------------	------------------------	----------------



Size	M	d1	d2	A	L	D
SK40-SOM08-44 L=25	8	8.5	14.5	44	25	15
SK40-SOM08-69 L=50	8	8.5	14.5	69	50	23
SK40-SOM08-94 L=75	8	8.5	14.5	94	75	23
SK40-SOM08-119 L=100	8	8.5	14.5	119	100	25
SK40-SOM10-24 L=5	10	10.5	18	24	5	18
SK40-SOM10-44 L=25	10	10.5	18	44	25	20
SK40-SOM10-69 L=50	10	10.5	18	69	50	23
SK40-SOM10-94 L=75	10	10.5	18	94	75	28
SK40-SOM10-119 L=100	10	10.5	18	119	100	32
SK40-SOM10-169 L=150	10	10.5	18	169	150	36.5
SK40-SOM12-24 L=5	12	12.5	21	24	5	21
SK40-SOM12-44 L=25	12	12.5	21	44	25	24
SK40-SOM12-69 L=50	12	12.5	21	69	50	24
SK40-SOM12-94 L=75	12	12.5	21	94	75	31
SK40-SOM12-119 L=100	12	12.5	21	119	100	33
SK40-SOM12-144 L=125	12	12.5	21	144	125	36
SK40-SOM12-169 L=150	12	12.5	21	169	150	40
SK40-SOM16-24 L=5	16	17	29	24	5	29
SK40-SOM16-44 L=25	16	17	29	44	25	29
SK40-SOM16-69 L=50	16	17	29	69	50	34
SK40-SOM16-94 L=75	16	17	29	94	75	34
SK40-SOM16-119 L=100	16	17	29	119	100	36
SK40-SOM16-144 L=125	16	17	29	144	125	40
SK40-SOM16-169 L=150	16	17	29	169	150	42.5

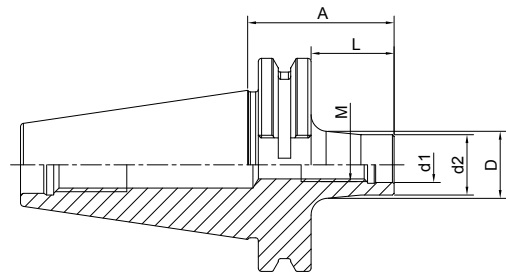




## Screw-in Milling Cutter Holder 锁牙刀柄，锥柄型



A ↗ ≤0.005	G Value G6.3	AD AD/B
---------------	-----------------	---------



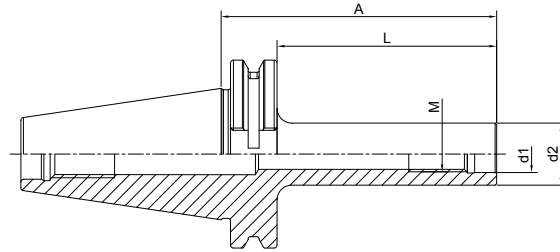
Size	M	d1	d2	A	L	D
SK50-SOM08-69 L=50	8	8.5	14.5	69	50	23
SK50-SOM08-119 L=100	8	8.5	14.5	119	100	25
SK50-SOM08-169 L=150	8	8.5	14.5	169	150	30
SK50-SOM10-69 L=50	10	10.5	18	69	50	23
SK50-SOM10-119 L=100	10	10.5	18	119	100	32
SK50-SOM10-169 L=150	10	10.5	18	169	150	36.5
SK50-SOM12-69 L=50	12	12.5	21	69	50	24
SK50-SOM12-119 L=100	12	12.5	21	119	100	33
SK50-SOM12-169 L=150	12	12.5	21	169	150	40
SK50-SOM16-69 L=50	16	17	29	69	50	34
SK50-SOM16-119 L=100	16	17	29	119	100	36
SK50-SOM16-169 L=150	16	17	29	169	150	42.5



## Screw-in Milling Cutter Holder

### 锁牙刀柄, 直柄型

A ↗ ≤0.005	G Value G6.3	AD AD/B
---------------	-----------------	---------

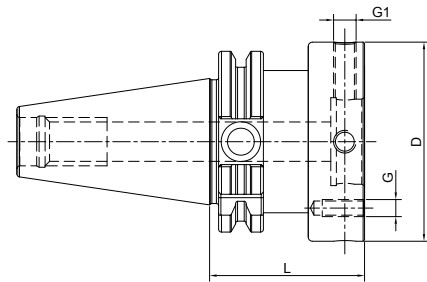


Size	M	d1	d2	A	L
SK40-M10-119 L=100	10	10.5	18	119	100
SK40-M10-169 L=150	10	10.5	18	169	150
SK40-M12-119 L=100	12	12.5	21	119	100
SK40-M12-144 L=125	12	12.5	21	144	125
SK40-M12-169 L=150	12	12.5	21	169	150
SK40-M16-119 L=100	16	17	29	119	100
SK40-M16-144 L=125	16	17	29	144	125
SK40-M16-169 L=150	16	17	29	169	150
SK50-M10-119 L=100	10	10.5	18	119	100
SK50-M10-169 L=150	10	10.5	18	169	150
SK50-M12-119 L=100	12	12.5	21	119	100
SK50-M12-169 L=150	12	12.5	21	169	150
SK50-M16-119 L=100	16	17	29	119	100
SK50-M16-169 L=150	16	17	29	169	150



## Runout Adjustable Flange Adapter 可调节精度法兰刀柄

A ↗ ≤0.002	G Value G6.3 G2.5	AD
---------------	----------------------	----



Size	SK	D	L	G	G1
SK30-MOD060-050	60	60	50	M5	M8x1
SK30-MOD070-050	70	70	50	M6	M8x1
SK40-MOD060-050	60	60	50	M5	M8x1
SK40-MOD070-050	70	70	50	M6	M8x1
SK40-MOD080-055	80	80	55	M6	M8x1
SK40-MOD100-060	100	100	60	M8	M10x1
SK50-MOD060-050	60	60	50	M5	M8x1
SK50-MOD070-050	70	70	50	M6	M8x1
SK50-MOD080-050	80	80	50	M6	M8x1
SK50-MOD100-060	100	100	60	M8	M10x1
SK50-MOD117-060	117	117	60	M8	M10x1
SK50-MOD140-060	140	140	60	M10	M10x1



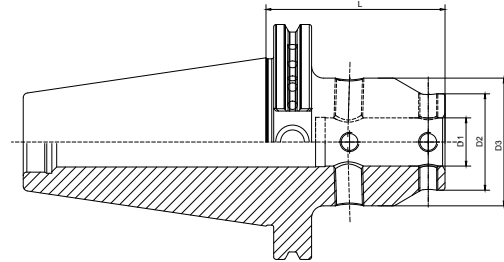
## UM Adjustable Tool Holder

### UM 调零刀柄

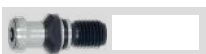
A ↗  
≤0.003

G Value  
G6.3 G2.5

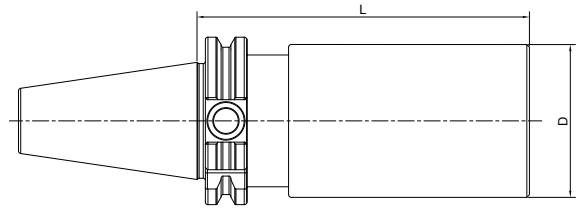
AD AD/B



Size	D1	D2	D3	L
SK40-UM12-65	12	28	44.5	65
SK40-UM16-65	16	32	48	65
SK40-UM20-85	20	40	53	85
SK40-UM25-100	25	48	63	100
SK40-UM32-105	32	52	63	105
SK50-UM12-65	12	28	44.5	65
SK50-UM16-65	16	32	48	65
SK50-UM20-75	20	40	53	75
SK50-UM25-85	25	48	63	85
SK50-UM32-90	32	52	63	90

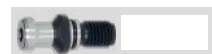


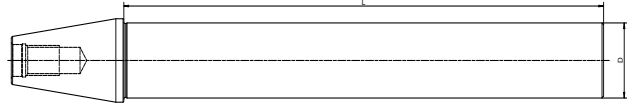
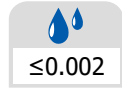
## Boring Bar Blank 基础柄



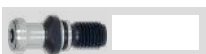
Size	D	L
SK30-D50-200	50	200
SK40-D50-200	50	200
SK40-D50-250	50	250
SK40-D63-250	63	250
SK50-D100-160	100	160
SK50-D100-250	100	250

Other sizes can be made by request.

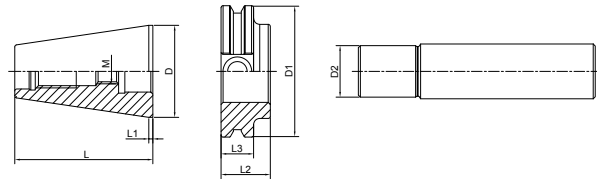


**Test Arbor**  
**主轴检测棒**


Size	D	L
SK30-32-250	32	250
SK40-40-300	40	300
SK50-50-300	50	300



## Alignment Tool for ATC Arm 调整机械手用组合模具



Size	D	D1	D2	L	L1	L2	L3	M
SK30-ATC-18D	31.75	50	18	51	3.2	20	15.9	M12
SK40-ATC-20D	44.45	63.55	20	71.6	3.2	25	15.9	M12
SK50-ATC-28D	69.85	97.5	28	104.95	3.2	35	15.9	M16

### Usage:

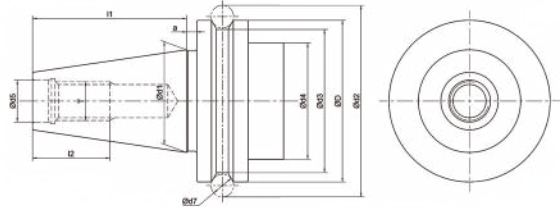
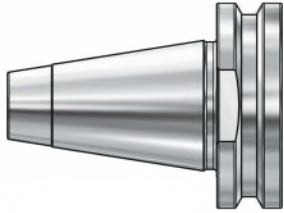
- 1) Put the Taper to the machine Spindle
- 2) Install flange to the ATC arm
- 3) Insert Pin into the flange
- 4) Adjust ATC arm and make sure the pin front part into the flange completely.



# ISO TOOL HOLDERS



## ISO Taper Standard ISO 锥柄标准

**ISO**


Size	D	d1	d2	d3	d4	d5	d7	l1	l2
ISO30	50	31.75	59.3	44.3	45	13	7	47.8	24
ISO40	63.55	44.45	72.3	56.25	50	17	7	68.4	32

**Material:** Alloyed case hardened steel  
**Surface Treatment:** Blackening and Bright  
**Taper tolerance:** <AT3  
**Hardness:** HRC 58-62  
**Carbon depth:** 0.8±0.2mm  
**Surface Roughness:** Ra<0.005mm  
**Balancing:** G2.5/25000  
**Cooling:** AD

## ISO TOOLING SYSTEM ISO 工具系统

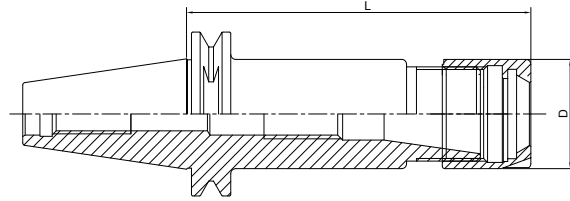
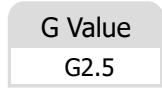
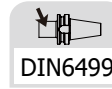
ER Collet Chuck.....	B.46
ER弹簧夹头刀柄.....	B.46
ER Collet Chuck .....	B.47
ER弹簧夹头刀柄.....	B.47
ER Collet Chuck.....	B.48
ER弹簧夹头刀柄 .....	B.48



ISO

## ER Collet Chuck without Drive Slots

### ER 弹簧夹头刀柄



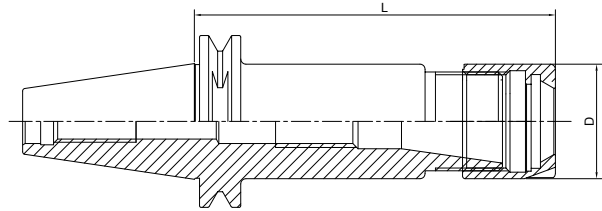
Size	D	L	Capacity
ISO10-ER11A-25	19	25	1-7
ISO20-ER16A-35	28	35	1-10
ISO20-ER20A-35	34	35	1-13
ISO25-ER16A-35	28	35	1-10
ISO25-ER20A-35	34	35	1-13
ISO30-ER16A-50	28	50	1-10
ISO30-ER20A-50	34	50	1-13

ISO10 is with pull stud  
ISO10 刀柄拉钉一体



**ER Collet Chuck without Drive Slots**  
**ER 弹簧夹头刀柄**

DIN6499	A $\nearrow$ $\leq 0.003$	G Value G2.5	AD
---------	------------------------------	-----------------	----



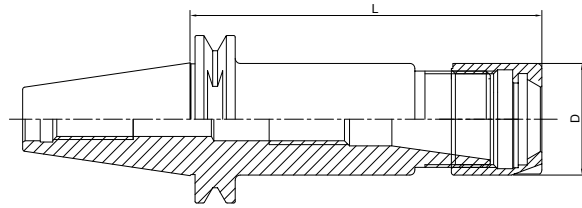
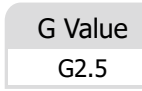
ISO

Size	D	L	Capacity
ISO20-ER16MS-35	22	35	1-10
ISO20-ER20MS-35	28	35	1-13
ISO25-ER16MS-35	22	35	1-10
ISO25-ER20MS-35	28	35	1-13
ISO25-ER25MS-35	35	35	2-16



## ER Collet Chuck without Drive Slots

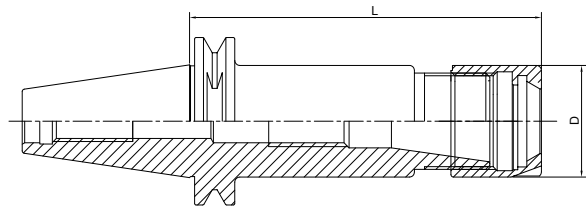
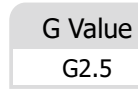
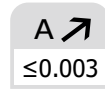
### ER 弹簧夹头刀柄



Size	D	L	Capacity
ISO25-ER25-35	42	35	2-16
ISO30-ER25-50	42	50	2-16
ISO30-ER32-50	50	50	2-20
ISO30-ER40-60	63	60	3-26



**ER Collet Chuck without Drive Slots**  
**ER 弹簧夹头刀柄**



Size	D	L	Capacity
ISO10-ER11M-25	16	25	1-7
ISO20-ER20M-35	28	35	1-13
ISO25-ER20M-35	28	35	1-13
ISO30-ER25M-50	35	50	2-16