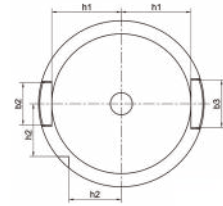
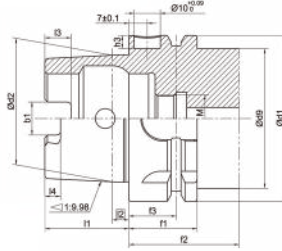


TOOL HOLDERS

HSK-A

HSK-A Taper Standard HSK-A 锥柄标准



Size	d1	d2	d9	l1	l2	l3	l4	f1	f2	f3	h1	h2	h3	b1	b2	b3
HSK25A	25	19.006	20	13	2.5	4	2	10	20	4.5	10	7.5	-	6.05	6	7
HSK32A	32	24.007	26	16	3.2	5	3	20	35	16	13	9.5	5.4	7.05	7	9
HSK40A	40	30.007	34	20	4	6	3.5	20	35	16	17	12	5.2	8.05	9	11
HSK50A	50	38.009	42	25	5	7.5	4.5	26	42	18	21	15.5	5.1	10.54	12	14
HSK63A	63	48.010	53	32	6.3	10	6	26	42	18	26.5	20	5.0	12.54	16	18
HSK80A	80	60.012	68	40	8	12	8	26	42	18	34	25	4.9	16.04	18	20
HSK100A	100	75.013	88	50	10	15	10	29	45	20	44	31.5	4.9	20.02	20	22

Taper standard: DIN 69893; ISO 12164

Material: Alloyed case hardened steel

Surface Treatment: Blackening and Bright

Taper tolerance: <AT3

Hardness: HRC 58-62

Carbon depth: 0.8±0.2mm

Surface Roughness: Ra<0.005mm

Balancing: G6.3/15000; G2.5/25000

HSK-A TOOLING SYSTEM

HSK-A 工具系统目录

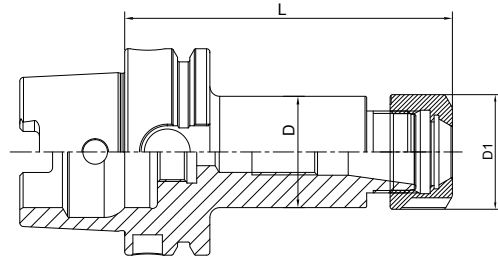
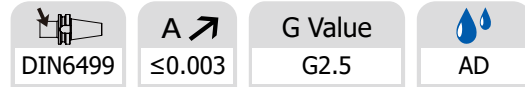
ER Collet Chuck.....	D.04
ER 弹簧夹头刀柄.....	D.04
Power Milling Chuck.....	D.09
强力铣刀柄	D.09
OZ Collet Chuck.....	D.11
OZ 夹头刀柄.....	D.11
SKS Collet Chuck.....	D.12
SKS 高速筒夹刀柄	D.12
TG Collet Chuck	D.13
TG 超强力刀柄.....	D.13
Precision Screw Collet Chuck	D.14
NDC后拉刀柄.....	D.14
Face Mill Holder.....	D.16
面铣刀柄	D.16
Combi Shell Mill Holder	D.20
混合插入式铣刀柄.....	D.20
Side Cutter Arbor	D.22
侧铣刀柄.....	D.22
End Mill Holder	D.23
侧固刀柄.....	D.23
Morse Taper Adapter	D.28
带扁尾莫氏刀柄	D.28
Morse Taper Adapter	D.29
带螺纹孔莫氏刀柄.....	D.29
Tool Holder Adatper Sleeve.....	D.30
转换刀柄.....	D.30
APU Drill Chuck Holder	D.31
APU 钻夹头刀柄.....	D.31
Precision Drill Chuck Holder.....	D.32
精密钻夹头刀柄	D.32
Quick Change Tapping Chuck.....	D.33
弹性快换攻丝刀柄	D.33
Screw-in Milling Cutter Holder	D.34
SOM 锁牙刀柄.....	D.34
Runout Adjustable Flange Adapter	D.36
可调节精度法兰刀柄	D.36
UM Adjustable.....	D.37
UM调零刀柄	D.37
Boring Bar Blank.....	D.38
基础柄.....	D.38
Test Arbor.....	D.39
主轴检测棒.....	D.39
Alignment Tool for ATC Arm	D.40
调整机械用手用组合模具	D.40



HSK

ER Collet Chuck with UM Nut

ER 弹簧夹头刀柄

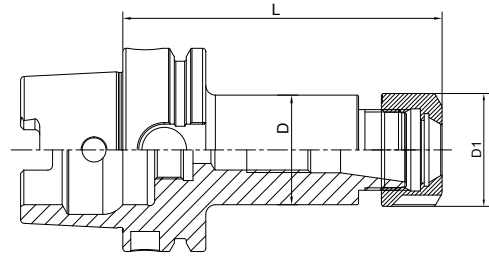


Size	D	D1	L1	Capacity
HSK32A-ER16UM-80	28	32	80	1-10
HSK32A-ER20UM-80	34	35	80	1-13
HSK32A-ER25-80	42	42	80	2-16
HSK32A-ER32-50	50	50	50	3-20
HSK40A-ER16UM-80	28	32	80	1-10
HSK40A-ER20UM-80	34	35	80	1-13
HSK40A-ER25-80	42	42	80	2-16
HSK40A-ER32-80	50	50	80	3-20
HSK50A-ER16UM-80	28	32	80	1-10
HSK50A-ER20UM-80	34	35	80	1-13
HSK50A-ER25-80	42	42	80	2-16
HSK50A-ER32-100	50	50	100	3-20
HSK63A-ER16UM-75	28	32	75	1-10
HSK63A-ER20UM-75	34	35	75	1-13
HSK63A-ER25-75	42	42	75	2-16
HSK63A-ER32-75	50	50	75	3-20
HSK63A-ER40-80	50	63	80	4-26
HSK63A-ER16UM-100	28	32	100	1-10
HSK63A-ER20UM-100	34	35	100	1-13
HSK63A-ER25-100	42	42	100	2-16
HSK63A-ER32-100	50	50	100	3-20
HSK63A-ER40-100	50	63	100	4-26
HSK63A-ER16UM-120	28	32	120	1-10
HSK63A-ER20UM-120	34	35	120	1-13
HSK63A-ER25-120	42	42	120	2-16
HSK63A-ER32-120	50	50	120	3-20
HSK63A-ER40-120	50	63	120	4-26



ER Collet Chuck with UM Nut
ER 弹簧夹头刀柄

DIN6499	A \nearrow ≤ 0.003	G Value G2.5	AD
---------	------------------------------	-----------------	----



Size	D	D1	L1	Capacity
HSK63A-ER16UM-160T	28	32	160	1-10
HSK63A-ER20UM-160	34	35	160	1-13
HSK63A-ER25-160	42	42	160	2-16
HSK63A-ER32-160	50	50	160	3-20
HSK63A-ER40-160	50	63	160	4-26
HSK63A-ER16UM-200T	28	32	200	1-10
HSK63A-ER20UM-200	34	35	200	1-13
HSK63A-ER25-200	42	42	200	2-16
HSK63A-ER32-200	50	50	200	3-20
HSK63A-ER40-200	50	63	200	4-26
HSK80A-ER16UM-100	28	32	100	1-10
HSK80A-ER20UM-100	34	35	100	1-13
HSK80A-ER25-100	42	42	100	2-16
HSK80A-ER32-100	50	50	100	3-20
HSK80A-ER40-120	50	63	120	4-26

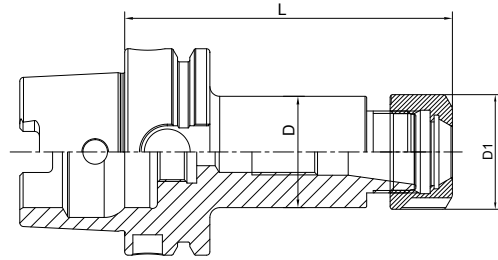
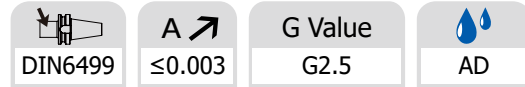
T refers to cutter side with taper design
 T 代表刀具端锥柄设计

HSK



ER Collet Chuck with UM Nut

ER 弹簧夹头刀柄

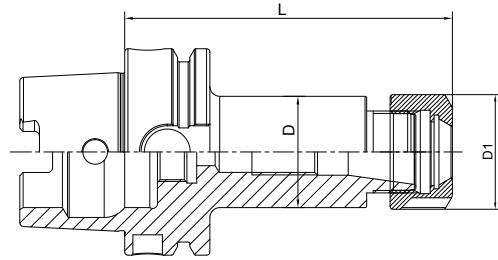
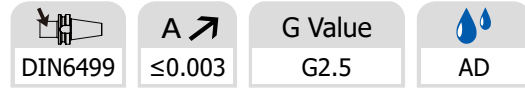


Size	D	D1	L1	Capacity
HSK100A-ER16UM-100	28	32	100	1-10
HSK100A-ER20UM-100	34	35	100	1-13
HSK100A-ER25-100	42	42	100	2-16
HSK100A-ER32-100	50	50	100	3-20
HSK100A-ER40-100	63	63	100	4-26
HSK100A-ER50-120	100	78	120	6-34
HSK100A-ER16UM-120T	28	32	120	1-10
HSK100A-ER20UM-120	34	35	120	1-13
HSK100A-ER25-120	42	42	120	2-16
HSK100A-ER32-120	50	50	120	3-20
HSK100A-ER40-120	63	63	120	4-26
HSK100A-ER16UM-160T	28	32	160	1-10
HSK100A-ER20UM-160	34	35	160	1-13
HSK100A-ER25-160	42	42	160	2-16
HSK100A-ER32-160	50	50	160	3-20
HSK100A-ER40-160	63	63	160	4-26
HSK100A-ER16UM-200T	28	32	200	1-10
HSK100A-ER20UM-200	34	35	200	1-13
HSK100A-ER25-200	42	42	200	2-16
HSK100A-ER32-200	50	50	200	3-20
HSK100A-ER40-200	63	63	200	4-26
HSK100A-ER25-250	42	42	250	2-16
HSK100A-ER32-250	50	50	250	3-20
HSK100A-ER40-250	63	63	250	4-26
HSK100A-ER25-300	42	42	300	2-16
HSK100A-ER32-300	50	50	300	3-20
HSK100A-ER40-300	63	63	300	4-26

T refers to cutter side with taper design
T 代表刀具端锥柄设计

ER Collet Chuck with Hex Nut

ER 弹簧夹头刀柄



Size	D	D1	L1	Capacity
HSK32A-ER16A-80	28	28	80	1-10
HSK32A-ER20A-80	34	34	80	1-13
HSK40A-ER16A-80	28	28	80	1-10
HSK40A-ER20A-80	34	34	80	1-13
HSK50A-ER16A-80	28	28	80	1-10
HSK50A-ER20A-80	34	34	80	1-13
HSK63A-ER16A-75	28	28	75	1-10
HSK63A-ER20A-75	34	34	75	1-13
HSK63A-ER16A-100	28	28	100	1-10
HSK63A-ER20A-100	34	34	100	1-13
HSK63A-ER16A-120	28	28	120	1-10
HSK63A-ER20A-120	34	34	120	1-13
HSK63A-ER16A-160T	28	28	160	1-10
HSK63A-ER20A-160	34	34	160	1-13
HSK63A-ER16A-200T	28	28	200	1-10
HSK63A-ER20A-200	34	34	200	1-13
HSK80A-ER16A-100	28	28	100	1-10
HSK80A-ER20A-100	34	34	100	1-13
HSK100A-ER16A-100	28	28	100	1-10
HSK100A-ER20A-100	34	34	100	1-13
HSK100A-ER16A-120T	28	28	120	1-10
HSK100A-ER20A-120	34	34	120	1-13
HSK100A-ER16A-160T	28	28	160	1-10
HSK100A-ER20A-160	34	34	160	1-13
HSK100A-ER16A-200T	28	28	200	1-10
HSK100A-ER20A-200	34	34	200	1-13

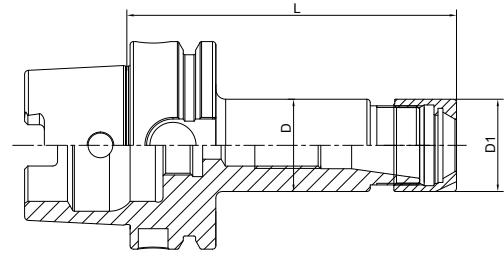
T refers to cutter side with taper design

T 代表刀具端锥柄设计



ER Collet Chuck with Mini Nut
ER 弹簧夹头刀柄

DIN6499	A \nearrow ≤ 0.003	G Value G2.5	AD
---------	------------------------------	-----------------	----



Size	D	D1	L1	Capacity
HSK32A-ER11M-50	16	16	50	1-7
HSK32A-ER16M-50	22	22	50	1-10
HSK32A-ER20M-50	28	28	50	1-13
HSK40A-ER11M-40	16	16	40	1-7
HSK40A-ER16M-60	22	22	60	1-10
HSK40A-ER20M-60	28	28	60	1-13
HSK50A-ER11M-60	16	16	60	1-7
HSK50A-ER16M-60	22	22	60	1-10
HSK50A-ER20M-60	28	28	60	1-13
HSK63A-ER11M-100	16	16	100	1-7
HSK63A-ER16M-100	22	22	100	1-10
HSK63A-ER20M-100	28	28	100	1-13
HSK63A-ER25M-100	35	35	100	2-16
HSK63A-ER11M-160T	16	16	160	1-7
HSK63A-ER16M-160T	22	22	160	1-10
HSK63A-ER20M-160	28	28	160	1-13
HSK63A-ER25M-160	35	35	160	2-16
HSK100A-ER16M-100	22	22	100	1-10
HSK100A-ER20M-100	28	28	100	1-13
HSK100A-ER25M-100	35	35	100	2-16
HSK100A-ER16M-160T	22	22	160	1-10
HSK100A-ER20M-160	28	28	160	1-13
HSK100A-ER25M-160	35	35	160	2-16

HSK

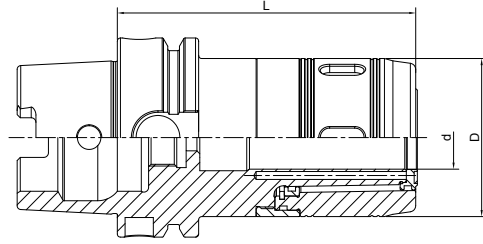


Power Milling Chuck 强力铣刀柄

 A ↗
 ≤ 0.008

 G Value
 G2.5

AD



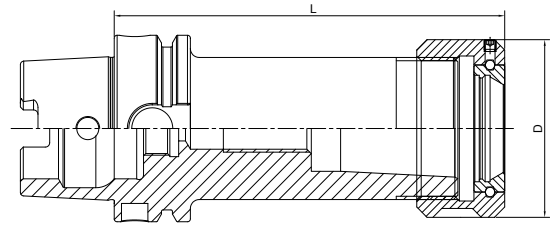
Size	d	D	L	Capacity
HSK63A-HC20-100	20	50	100	3-16; 20
HSK63A-HC25-100	25	59	100	3-20; 25
HSK63A-HC32-120	32	72	120	3-25; 32
HSK100A-HC20-105	20	50	105	3-16; 20
HSK100A-HC25-105	25	59	105	3-20; 25
HSK100A-HC32-120	32	72	120	3-25; 32
HSK100A-HC32-165	32	72	165	3-25; 32
HSK100A-HC32-200	32	72	200	3-25; 32



OZ Collet Chuck
OZ 夹头刀柄



DIN6391	A ≤ 0.005	G Value G2.5	AD
---------	----------------	--------------	----



Size	D	L	Capacity
HSK50A-OZ16-90	43	90	2-16
HSK50A-OZ25-110	60	110	2-25
HSK63A-OZ16-100	43	100	2-16
HSK63A-OZ25-100	60	100	2-25
HSK63A-OZ32-120	72	120	3-32
HSK100A-OZ16-110	43	110	2-16
HSK100A-OZ25-120	60	120	2-25
HSK100A-OZ32-130	72	130	3-32

HSK

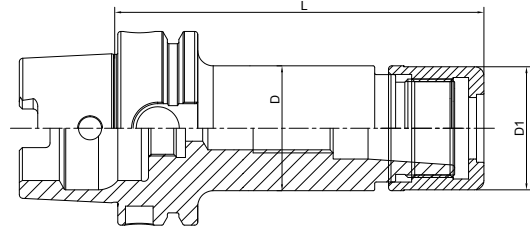


High Speed SKS Collet Chuck SKS 高速筒夹刀柄

 A ↗
 ≤0.003

 G Value
 G2.5

AD

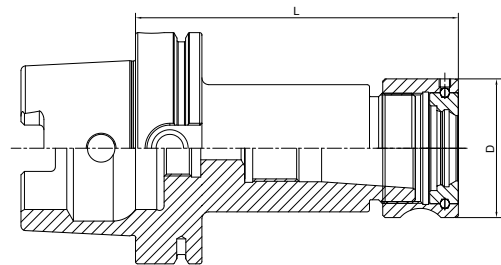


Size	D	D1	L	Capacity	M
HSK63A-SKS10-90	27.5	27.1	90	2-10	M21.5*1
HSK63A-SKS16-90	40.6	40	90	3-16	M32*1.5
HSK63A-SKS10-120	27.5	27.1	120	2-10	M21.5*1
HSK63A-SKS16-120	40.6	40	120	3-16	M32*1.5
HSK100A-SKS10-90	27.5	27.1	90	2-10	M21.5*1
HSK100A-SKS16-90	40.6	40	90	3-16	M32*1.5
HSK100A-SKS10-120	27.5	27.1	120	2-10	M21.5*1
HSK100A-SKS16-120	40.6	40	120	3-16	M32*1.5

HSK


TG Collet Chuck
TG 超強力刀柄

A ↗ ≤0.005	G Value G2.5	AD
---------------	-----------------	----



Size	D	L	Collet	Capacity
HSK50A-TG75-110	50	110	TG 75	2-20
HSK63A-TG75-120	50	120	TG 75	2-20
HSK63A-TG100-130	60	130	TG 100	3-25
HSK100A-TG75-120	50	120	TG 100	3-20
HSK100A-TG100-130	60	130	TG 100	3-25

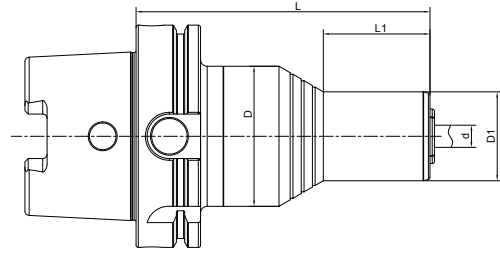
HSK



Precision Screw Collet Chuck NDC 后拉刀柄

 A ↗
 ≤ 0.003

 G Value
 G2.5

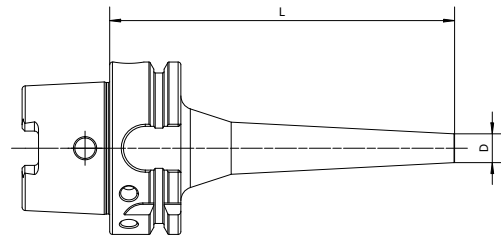
 AD


Size	L	L1	D	D1	Capacity
HSK50A-NDC20-105	105	20	53	40	3-20
HSK63A-NDC20-100	100	20	53	40	3-20
HSK63A-NDC20-145	145	61	53	40	3-20
HSK63A-NDC20-178	178	97	53	40	3-20
HSK63A-NDC25-152	152	-	63	-	16-32
HSK63A-NDC32-155	155	-	63	-	20-32
HSK100A-NDC20-105	105	15	63	40	3-20
HSK100A-NDC20-150	150	48	63	40	3-20
HSK100A-NDC20-186	186	84	63	40	3-20
HSK100A-NDC25-152	152	-	70	-	16-32
HSK100A-NDC32-155	155	-	70	-	20-32



Pull Back Collet Chuck
DC 后拉刀柄

A ↗ ≤0.005	G Value G2.5	AD
---------------	-----------------	----



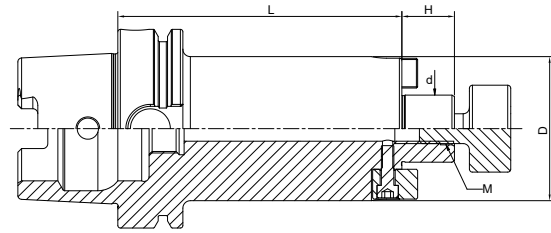
Size	D	L	Capacity
HSK63A-DC06-60	14	60	1-6
HSK63A-DC06-90	14	90	1-6
HSK63A-DC06-120	14	120	1-6
HSK63A-DC06-150	14	150	1-6
HSK63A-DC08-60	22	60	1-10
HSK63A-DC08-90	22	90	1-10
HSK63A-DC08-120	22	120	1-10
HSK63A-DC08-150	22	150	1-10
HSK63A-DC08-200	22	200	1-10
HSK63A-DC12-90	34	90	1-12
HSK63A-DC12-120	34	120	1-12
HSK63A-DC12-150	34	150	1-12
HSK63A-DC12-200	34	200	1-12
HSK100A-DC06-110	14	110	1-6
HSK100A-DC06-150	14	150	1-6
HSK100A-DC08-110	22	110	1-10
HSK100A-DC08-150	22	150	1-10
HSK100A-DC08-200	22	200	1-10
HSK100A-DC12-120	34	120	1-12
HSK100A-DC12-150	34	150	1-12
HSK100A-DC12-200	34	200	1-12

HSK



Face Mill Holder Inch 英制面铣刀柄

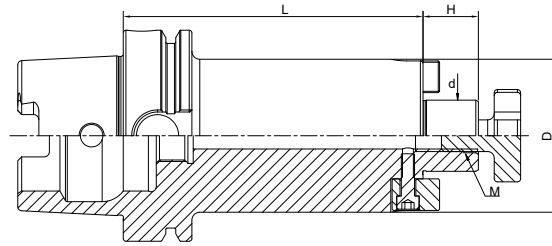
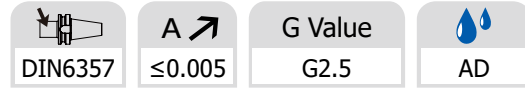
A ↗ ≤0.005	G Value G2.5	AD
---------------	-----------------	----



Size	d	D	H	L	M
HSK63A-FMA3/4"-50	3/4"	42.926	17.45	50	3/8-24
HSK63A-FMA1"-60	1"	55.626	17.45	60	1/2-20
HSK63A-FMA1-1/4"-60	1-1/4"	69.85	17.45	60	5/8-18
HSK63A-FMA1-1/2"-60	1-1/2"	78	23.83	60	3/4-16
HSK63A-FMA3/4"-100	3/4"	42.926	17.45	100	3/8-24
HSK63A-FMA1"-100	1"	55.626	17.45	100	1/2-20
HSK63A-FMA1-1/4"-100	1-1/4"	69.85	17.45	100	5/8-18
HSK63A-FMA1-1/2"-100	1-1/2"	78	23.83	100	3/4-16
HSK63A-FMA3/4"-160	3/4"	42.926	17.45	160	3/8-24
HSK63A-FMA1"-160	1"	55.626	17.45	160	1/2-20
HSK63A-FMA1-1/4"-160	1-1/4"	69.85	17.45	160	5/8-18
HSK63A-FMA1-1/2"-160	1-1/2"	78	23.83	160	3/4-16
HSK100A-FMA3/4"-50	3/4"	42.926	17.45	50	3/8-24
HSK100A-FMA1"-50	1"	55.626	17.45	50	1/2-20
HSK100A-FMA1-1/4"-60	1-1/4"	69.85	17.45	60	5/8-18
HSK100A-FMA1-1/2"-60	1-1/2"	78	23.83	60	3/4-16
HSK100A-FMA3/4"-100	3/4"	42.926	17.45	100	3/8-24
HSK100A-FMA1"-100	1"	55.626	17.45	100	1/2-20
HSK100A-FMA1-1/4"-100	1-1/4"	69.85	17.45	100	5/8-18
HSK100A-FMA1-1/2"-100	1-1/2"	78	23.83	100	3/4-16
HSK100A-FMA3/4"-160	3/4"	42.926	17.45	160	3/8-24
HSK100A-FMA1"-160	1"	55.626	17.45	160	1/2-20
HSK100A-FMA1-1/4"-160	1-1/4"	69.85	17.45	160	5/8-18
HSK100A-FMA1-1/2"-160	1-1/2"	78	23.83	160	3/4-16

HSK


Face Mill Holder 面铣刀柄



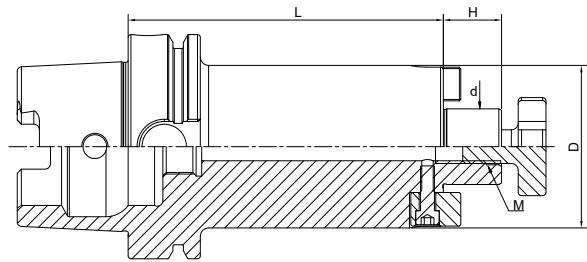
Size	d	D	H	L	M
HSK50A-FMB16-50	16	38	17	50	M8
HSK50A-FMB22-60	22	48	19	60	M10
HSK50A-FMB27-60	27	58	21	60	M12
HSK50A-FMB32-60	32	78	24	60	M16
HSK63A-FMB16-50	16	38	17	50	M8
HSK63A-FMB22-50	22	48	19	50	M10
HSK63A-FMB27-60	27	58	21	60	M12
HSK63A-FMB32-60	32	78	24	60	M16
HSK63A-FMB40-60	40	88	27	60	M20
HSK63A-FMB16-100	16	38	17	100	M8
HSK63A-FMB22-100	22	48	19	100	M10
HSK63A-FMB27-100	27	58	21	100	M12
HSK63A-FMB32-100	32	78	24	100	M16
HSK63A-FMB40-100	40	88	27	100	M20
HSK63A-FMB16-160	16	38	17	160	M8
HSK63A-FMB22-160	22	48	19	160	M10
HSK63A-FMB27-160	27	58	21	160	M12
HSK63A-FMB32-160	32	78	24	160	M16
HSK63A-FMB40-160	40	88	27	160	M20
HSK63A-FMB16-200	16	38	17	200	M8
HSK63A-FMB22-200	22	48	19	200	M10
HSK63A-FMB27-200	27	58	21	200	M12
HSK63A-FMB32-200	32	78	24	200	M16
HSK63A-FMB40-200	40	88	27	200	M20
HSK80A-FMB22-50	22	48	19	50	M10
HSK80A-FMB27-50	27	58	21	50	M12
HSK80A-FMB32-60	32	78	24	60	M16
HSK80A-FMB40-60	40	88	27	60	M20

HSK


Face Mill Holder
面铣刀柄



DIN6357	A ≤ 0.003	G Value G2.5	AD
---------	----------------	-----------------	----



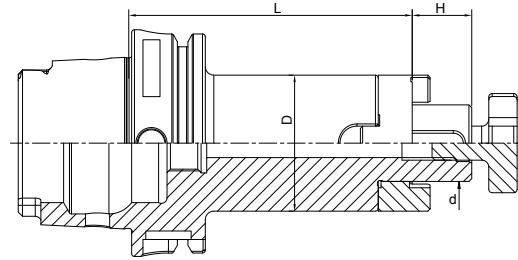
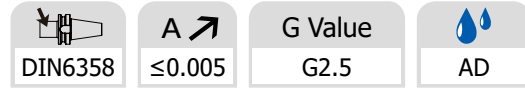
Size	d	D	H	L	M
HSK100A-FMB22-50	22	48	19	50	M10
HSK100A-FMB27-50	27	58	21	50	M12
HSK100A-FMB32-60	32	78	24	60	M16
HSK100A-FMB40-60	40	88	27	60	M20
HSK100A-FMB60-70	60	129	25	70	M30
HSK100A-FMB22-100	22	48	19	100	M10
HSK100A-FMB27-100	27	58	21	100	M12
HSK100A-FMB32-100	32	78	24	100	M16
HSK100A-FMB40-100	40	88	27	100	M20
HSK100A-FMB22-160	22	48	19	160	M10
HSK100A-FMB27-160	27	58	21	160	M12
HSK100A-FMB32-160	32	78	24	160	M16
HSK100A-FMB40-160	40	88	27	160	M20
HSK100A-FMB22-200	22	48	19	200	M10
HSK100A-FMB27-200	27	58	21	200	M12
HSK100A-FMB32-200	32	78	24	200	M16
HSK100A-FMB40-200	40	88	27	200	M20
HSK100A-FMB22-250	22	48	19	250	M10
HSK100A-FMB27-250	27	58	21	250	M12
HSK100A-FMB32-250	32	78	24	250	M16
HSK100A-FMB40-250	40	88	27	250	M20
HSK100A-FMB22-300	22	48	19	300	M10
HSK100A-FMB27-300	27	58	21	300	M12
HSK100A-FMB32-300	32	78	24	300	M16
HSK100A-FMB40-300	40	88	27	300	M20

HSK



Combi Shell Mill Holder

混合插入式铣刀柄

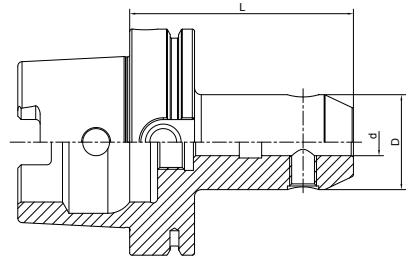


Size	d	D	L	L1
HSK50A-SEMC16-50	16	32	50	17
HSK50A-SEMC22-50	22	40	50	19
HSK50A-SEMC27-65	27	48	65	21
HSK50A-SEMC32-65	32	58	65	24
HSK63A-SEMC16-60	16	32	60	17
HSK63A-SEMC22-60	22	40	60	19
HSK63A-SEMC27-60	27	48	60	21
HSK63A-SEMC32-60	32	58	60	24
HSK63A-SEMC40-70	40	70	70	27
HSK63A-SEMC16-100	16	32	100	17
HSK63A-SEMC22-100	22	40	100	19
HSK63A-SEMC27-100	27	48	100	21
HSK63A-SEMC32-100	32	58	100	24
HSK80A-SEMC16-60	16	32	60	17
HSK80A-SEMC22-60	22	40	60	19
HSK80A-SEMC27-60	27	48	60	21
HSK80A-SEMC32-60	32	58	60	24
HSK80A-SEMC40-70	40	70	70	27
HSK100A-SEMC16-60	16	32	60	17
HSK100A-SEMC22-60	22	40	60	19
HSK100A-SEMC27-60	27	48	60	21
HSK100A-SEMC32-60	32	58	60	24
HSK100A-SEMC40-70	40	70	70	27

HSK


End Mill Holder Weldon
侧固刀柄

DIN6359/1835B	A ↗ ≤0.005	G Value G2.5	AD
----------------------	----------------------	------------------------	-----------

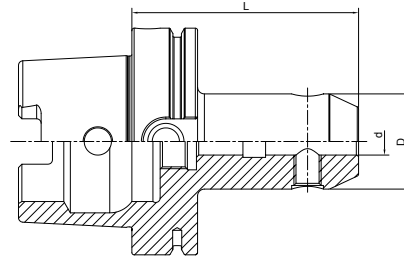
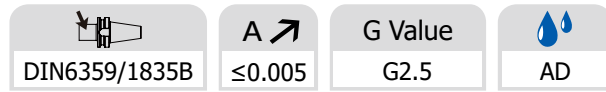


Size	d	D	L
HSK50A-SLA06-65	6	25	65
HSK50A-SLA08-65	8	28	65
HSK50A-SLA10-65	10	35	65
HSK50A-SLA12-80	12	42	80
HSK50A-SLA14-80	14	44	80
HSK50A-SLA16-80	16	48	80
HSK50A-SLA18-80	18	50	80
HSK50A-SLA20-80	20	52	80
HSK50A-SLA25-110	25	60	110
HSK50A-SLA32-110	32	60	110

HSK



End Mill Holder Weldon 侧固刀柄

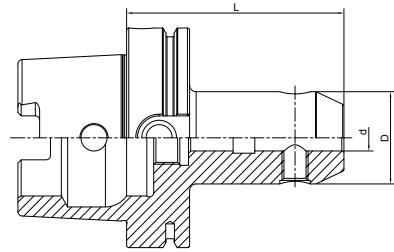


Size	d	D	L
HSK63A-SLA06-65	6	25	65
HSK63A-SLA08-65	8	28	65
HSK63A-SLA10-65	10	35	65
HSK63A-SLA12-80	12	42	80
HSK63A-SLA14-80	14	44	80
HSK63A-SLA16-80	16	48	80
HSK63A-SLA20-80	20	52	80
HSK63A-SLA25-110	25	65	110
HSK63A-SLA32-110	32	72	110
HSK63A-SLA40-125	40	80	125
HSK63A-SLA06-100	6	25	100
HSK63A-SLA08-100	8	28	100
HSK63A-SLA10-100	10	35	100
HSK63A-SLA14-100	14	44	100
HSK63A-SLA16-100	16	48	100
HSK63A-SLA18-100	18	50	100
HSK63A-SLA20-100	20	52	100
HSK63A-SLA06-160	6	25	160
HSK63A-SLA08-160	8	28	160
HSK63A-SLA10-160	10	35	160
HSK63A-SLA12-160	12	42	160
HSK63A-SLA14-160	14	44	160
HSK63A-SLA16-160	16	48	160
HSK63A-SLA18-160	18	50	160
HSK63A-SLA20-160	20	52	160
HSK63A-SLA25-160	25	65	160
HSK63A-SLA32-160	32	72	160



End Mill Holder Weldon
侧固刀柄

DIN6359/1835B	A ↗ ≤0.005	G Value G2.5	AD
----------------------	----------------------	------------------------	-----------

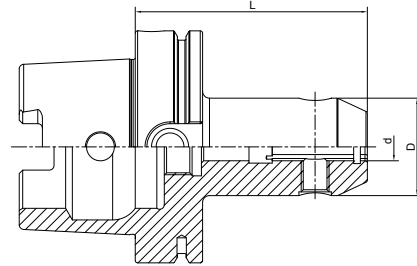
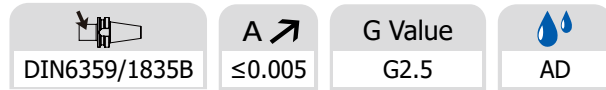


Size	d	D	L
HSK80A-SLA06-80	6	25	80
HSK80A-SLA08-80	8	28	80
HSK80A-SLA10-80	10	35	80
HSK80A-SLA12-80	12	42	80
HSK80A-SLA14-80	14	44	80
HSK80A-SLA16-100	16	48	100
HSK80A-SLA18-100	18	50	100
HSK80A-SLA20-100	20	52	100
HSK80A-SLA25-100	25	65	100
HSK80A-SLA32-110	32	72	110
HSK80A-SLA40-120	40	80	120
HSK100A-SLA08-80	8	28	80
HSK100A-SLA10-80	10	35	80
HSK100A-SLA12-80	12	42	80
HSK100A-SLA14-80	14	44	80
HSK100A-SLA16-100	16	48	100
HSK100A-SLA18-100	18	50	100
HSK100A-SLA20-100	20	52	100
HSK100A-SLA25-100	25	65	100
HSK100A-SLA32-100	32	72	100
HSK100A-SLA40-105	40	80	105
HSK100A-SLA50-130	50	100	130
HSK100A-SLA08-160	8	28	160
HSK100A-SLA10-160	10	35	160
HSK100A-SLA12-160	12	42	160
HSK100A-SLA14-160	14	44	160
HSK100A-SLA16-160	16	48	160
HSK100A-SLA18-160	18	50	160
HSK100A-SLA20-160	20	52	160
HSK100A-SLA25-160	25	65	160
HSK100A-SLA32-160	32	72	160
HSK100A-SLA40-160	40	80	160

HSK



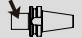

End Mill Holder with Coolant Channels 侧固刀柄, 端面出水型

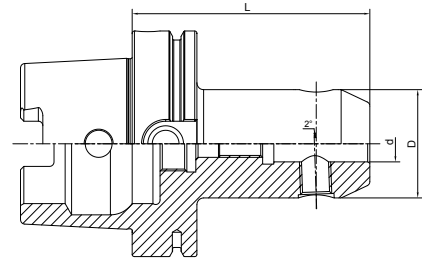


Size	d	D	L
HSK63A-SLA06-65K	6	25	65
HSK63A-SLA08-65K	8	28	65
HSK63A-SLA10-65K	10	35	65
HSK63A-SLA12-80K	12	42	80
HSK63A-SLA14-80K	14	44	80
HSK63A-SLA16-80K	16	48	80
HSK63A-SLA18-80K	18	50	80
HSK63A-SLA20-80K	20	52	80
HSK63A-SLA25-110K	25	65	110
HSK63A-SLA32-110K	32	72	110
HSK63A-SLA40-125K	40	80	125
HSK100A-SLA06-80K	6	25	80
HSK100A-SLA08-80K	8	28	80
HSK100A-SLA10-80K	10	35	80
HSK100A-SLA12-80K	12	42	80
HSK100A-SLA14-80K	14	44	80
HSK100A-SLA16-100K	16	48	100
HSK100A-SLA18-100K	18	50	100
HSK100A-SLA20-100K	20	52	100
HSK100A-SLA25-100K	25	65	100
HSK100A-SLA32-100K	32	72	100
HSK100A-SLA40-105K	40	80	105



End Mill Holder Whistle Notch
侧固式铣刀柄，斜 2 度

 DIN6359/1835B	A ↗ ≤0.005	G Value G2.5	 AD
--	----------------------	------------------------	---

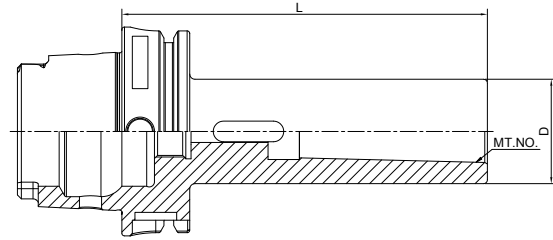
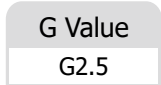
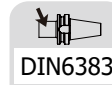


Size	d	D	L
HSK63A-SLB06-80	6	25	80
HSK63A-SLB08-80	8	28	80
HSK63A-SLB10-80	10	35	80
HSK63A-SLB12-90	12	42	90
HSK63A-SLB14-90	14	44	90
HSK63A-SLB16-100	16	48	100
HSK63A-SLB18-100	18	50	100
HSK63A-SLB20-100	20	52	100
HSK63A-SLB25-110	25	65	110
HSK63A-SLB32-110	32	72	110
HSK63A-SLB40-125	40	80	125
HSK100A-SLB06-90	6	25	90
HSK100A-SLB08-90	8	28	90
HSK100A-SLB10-90	10	35	90
HSK100A-SLB12-100	12	42	100
HSK100A-SLB14-100	14	44	100
HSK100A-SLB16-100	16	48	100
HSK100A-SLB18-100	18	50	100
HSK100A-SLB20-110	20	52	110
HSK100A-SLB25-120	25	65	120
HSK100A-SLB32-120	32	72	120
HSK100A-SLB40-120	40	80	120

HSK



Morse Taper Adapter with Tang 带扁尾莫氏刀柄

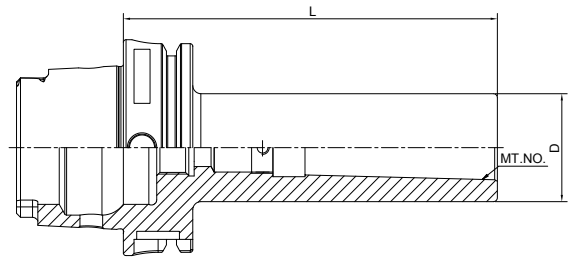


Size	MT. NO.	D	L
HSK50A-MTA1-100	1	25	100
HSK50A-MTA2-120	2	32	120
HSK50A-MTA3-140	3	40	140
HSK63A-MTA1-100	1	25	100
HSK63A-MTA2-120	2	32	120
HSK63A-MTA3-140	3	40	140
HSK63A-MTA4-160	4	48	160
HSK80A-MTA1-110	1	25	110
HSK80A-MTA2-120	2	32	120
HSK80A-MTA3-140	3	40	140
HSK80A-MTA4-160	4	48	160
HSK100A-MTA1-110	1	25	110
HSK100A-MTA2-120	2	32	120
HSK100A-MTA3-150	3	40	150
HSK100A-MTA4-170	4	48	170
HSK100A-MTA5-200	5	63	200



Morse Taper Adapter with Drawbar
带螺纹孔莫氏刀柄

DIN6364	A ↗ ≤0.005	G Value G2.5	A
---------	------------	--------------	---

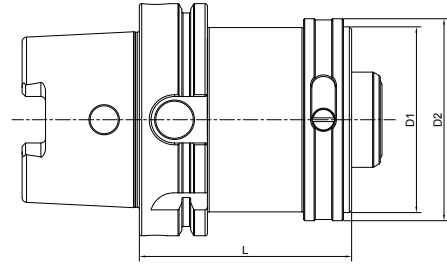


Size	MT. NO.	D	L
HSK50A-MTB1-100	1	25	100
HSK50A-MTB2-120	2	32	120
HSK50A-MTB3-140	3	40	140
HSK63A-MTB1-100	1	25	100
HSK63A-MTB2-120	2	32	120
HSK63A-MTB3-140	3	40	140
HSK63A-MTB4-160	4	48	160
HSK80A-MTB1-110	1	25	110
HSK80A-MTB2-120	2	32	120
HSK80A-MTB3-150	3	40	150
HSK80A-MTB4-170	4	48	170
HSK100A-MTB1-110	1	25	110
HSK100A-MTB2-120	2	32	120
HSK100A-MTB3-150	3	40	150
HSK100A-MTB4-170	4	48	170
HSK100A-MTB5-200	5	63	200

HSK



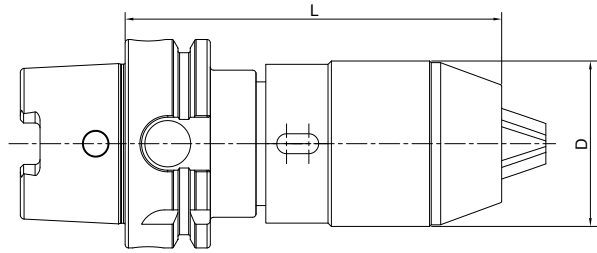
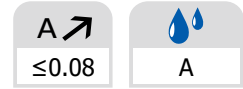
Tool Holder Adatper Sleeve 转换刀柄



Size	D1	D2	L
HSK50A-HSK50C-80	50	55	80
HSK50A-HSK50C-100	50	55	100
HSK63A-HSK63C-100	63	70	100
HSK63A-HSK63C-140	63	70	140
HSK80A-HSK80C-120	80	87	120
HSK80A-HSK80C-160	80	87	160
HSK100A-HSK100C-140	100	110	140
HSK100A-HSK100C-200	100	110	200
HSK50A-HSK32C-60	32	37	60
HSK50A-HSK32C-70	40	45	70
HSK63A-HSK32C-70	32	37	70
HSK63A-HSK40C-80	40	45	80
HSK63A-HSK50C-80	50	55	80
HSK80A-HSK40C-80	40	45	80
HSK80A-HSK50C-80	50	55	80
HSK80A-HSK63C-90	63	70	90
HSK100A-HSK50C-80	50	55	80
HSK100A-HSK63C-100	63	70	100
HSK100A-HSK80C-100	80	87	100



APU Drill Chuck Holder
APU 钻夹头刀柄




Size	D	L	Capacity
HSK63A-APU13-130	48	130	1-13
HSK63A-APU16-140	53	140	3-16
HSK100A-APU13-140	48	140	1-13
HSK100A-APU16-150	53	150	3-16

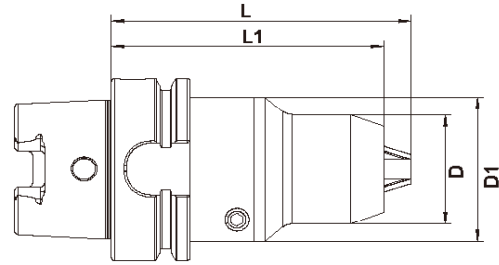
HSK



Precision Drill Chuck Holder

精密钻夹头刀柄

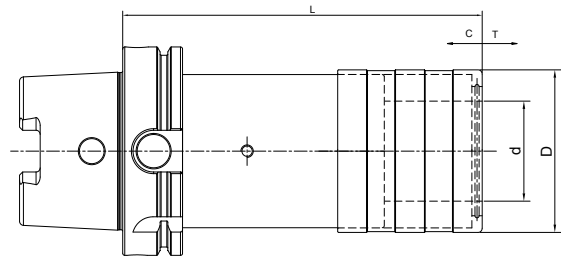
A ↗ ≤0.03	G Value G2.5	 AD
--------------	-----------------	---



Size	D	D1	L	L1	Capacity
HSK63A-CPU10-90	38	50	90	32	1-10
HSK63A-CPU13-100	50	-	100	-	1-13
HSK63A-CPU16-100	50	-	100	-	1-16
HSK100A-CPU13-105	50	-	105	-	1-13
HSK100A-CPU16-105	50	-	105	-	1-16

HSK


Quick Change Tapping Chuck with Length Compensation 弹性快换攻丝刀柄



Size	d	D	L	T	C
HSK63A-TC312-102	19	36	102	7.5	7.5
HSK63A-TC820-140	31	53	140	12.5	12.5
HSK63A-TC1433-141	48	78	141	22	22
HSK100A-TC312-112	19	36	112	7.5	7.5
HSK100A-TC820-148	31	53	148	12.5	12.5
HSK100A-TC1433-144	48	78	144	22	22

HSK

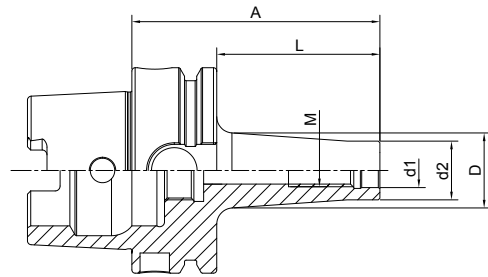


Screw-in Milling Cutter Holder

锁牙刀柄, 锥柄型



A ↗ ≤0.005	G Value G2.5	AD
---------------	-----------------	----



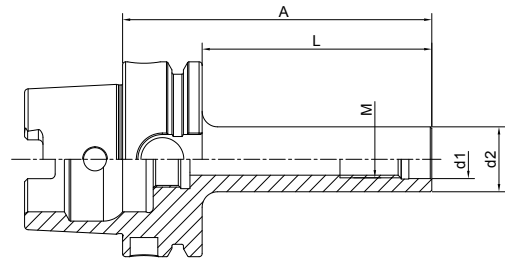
Size	M	d1	d2	A	L	D
HSK63A-SOM08-51 L=25	8	8.5	14.5	51	25	15
HSK63A-SOM08-76 L=50	8	8.5	14.5	76	50	23
HSK63A-SOM08-101 L=75	8	8.5	14.5	101	75	23
HSK63A-SOM10-51 L=25	10	10.5	18	51	25	20
HSK63A-SOM10-76 L=50	10	10.5	18	76	50	23
HSK63A-SOM10-126 L=100	10	10.5	18	126	100	32
HSK63A-SOM10-176 L=150	10	10.5	18	176	150	36.5
HSK63A-SOM12-51 L=25	12	12.5	21	51	25	24
HSK63A-SOM12-76 L=50	12	12.5	21	76	50	34
HSK63A-SOM12-101 L=75	12	12.5	21	101	75	31
HSK63A-SOM12-126 L=100	12	12.5	21	126	100	33
HSK63A-SOM12-176 L=150	12	12.5	21	176	150	40
HSK63A-SOM16-51 L=25	16	17	29	51	25	29
HSK63A-SOM16-76 L=50	16	17	29	76	50	34
HSK63A-SOM16-101 L=75	16	17	29	101	75	34
HSK63A-SOM16-126 L=100	16	17	29	126	100	36
HSK63A-SOM16-176 L=150	16	17	29	176	150	42.5
HSK100A-SOM08-79 L=50	8	8.5	14.5	79	50	23
HSK100A-SOM10-79 L=50	10	10.5	18	79	50	23
HSK100A-SOM10-129 L=100	10	10.5	18	129	100	32
HSK100A-SOM10-179 L=150	10	10.5	18	179	150	36.5
HSK100A-SOM12-79 L=50	12	12.5	21	79	50	24
HSK100A-SOM12-129 L=100	12	12.5	21	129	100	33
HSK100A-SOM12-179 L=150	12	12.5	21	179	150	40
HSK100A-SOM16-79 L=50	16	17	29	79	50	34
HSK100A-SOM16-129 L=100	16	17	29	129	100	36
HSK100A-SOM16-179 L=150	16	17	29	179	150	42.5



Screw-in Milling Cutter Holder 锁牙刀柄，直柄型




A ↗ ≤0.005	G Value G2.5	AD
----------------------	------------------------	-----------

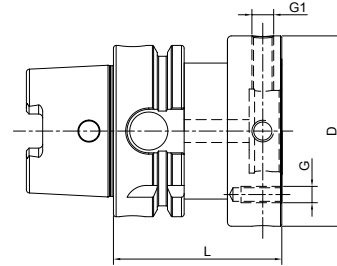


Size	M	d1	d2	A	L
HSK63A-M10-126 L=100	10	10.5	18	126	100
HSK63A-M10-176 L=150	10	10.5	18	176	150
HSK63A-M12-101 L=75	12	12.5	21	101	75
HSK63A-M12-126 L=100	12	12.5	21	126	100
HSK63A-M12-176 L=150	12	12.5	21	176	150
HSK63A-M16-101 L=75	16	17	29	101	75
HSK63A-M16-126 L=100	16	17	29	126	100
HSK63A-M16-176 L=150	16	17	29	176	150
HSK100A-M10-129 L=100	10	10.5	18	129	100
HSK100A-M10-179 L=150	10	10.5	18	179	150
HSK100A-M12-129 L=100	12	12.5	21	129	100
HSK100A-M12-179 L=150	12	12.5	21	179	150
HSK100A-M16-129 L=100	16	17	29	129	100
HSK100A-M16-179 L=150	16	17	29	179	150



Runout Adjustable Flange Adapter 可调节精度法兰刀柄

A ↗ ≤0.002	G Value G2.5	 AD
---------------	-----------------	---

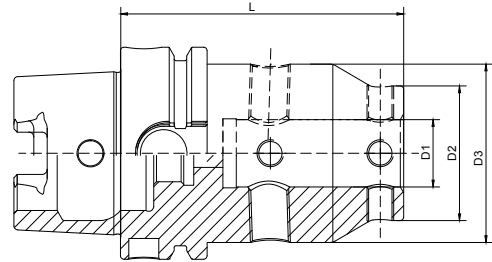


Size	HSK-A	D	L	G	G1
HSK50A-MOD060-060	50	60	60	M5	M8x1
HSK50A-MOD070-060	50	70	60	M6	M8x1
HSK50A-MOD080-060	50	80	60	M6	M8x1
HSK63A-MOD060-060	63	60	60	M5	M8x1
HSK63A-MOD070-060	63	70	60	M6	M8x1
HSK63A-MOD080-060	63	80	60	M6	M8x1
HSK63A-MOD100-065	63	100	65	M8	M10x1
HSK63A-MOD117-065	63	117	65	M8	M10x1
HSK80A-MOD060-050	80	60	50	M5	M8x1
HSK80A-MOD070-060	80	70	60	M6	M8x1
HSK80A-MOD080-060	80	80	60	M6	M8x1
HSK80A-MOD100-065	80	100	65	M8	M10x1
HSK80A-MOD117-065	80	117	65	M8	M10x1
HSK80A-MOD140-075	80	140	75	M10	M10x1
HSK100A-MOD060-055	100	60	55	M5	M8x1
HSK100A-MOD070-055	100	70	55	M6	M8x1
HSK100A-MOD080-055	100	80	55	M6	M8x1
HSK100A-MOD100-065	100	100	65	M8	M10x1
HSK100A-MOD117-065	100	117	65	M8	M10x1
HSK100A-MOD140-075	100	140	75	M10	M10x1



UM Adjustable Tool Holder
UM 调零刀柄

A ↗ ≤0.003	G Value G2.5	AD
---------------	-----------------	----



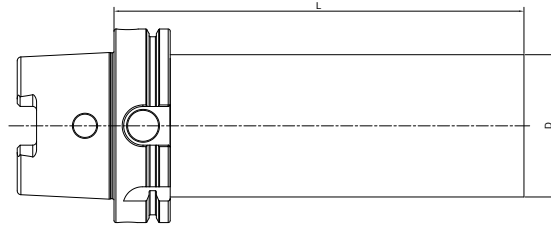
Size	D1	D2	D3	L
HSK50A-UM12-85	12	28	44.5	85
HSK50A-UM16-85	16	32	48	85
HSK50A-UM20-95	20	40	53	95
HSK50A-UM25-105	25	48	63	105
HSK50A-UM32-110	32	52	63	110
HSK63A-UM12-75	12	28	44.5	75
HSK63A-UM16-75	16	32	48	75
HSK63A-UM20-85	20	40	53	85
HSK63A-UM25-105	25	48	63	105
HSK63A-UM32-110	32	52	63	110
HSK100A-UM12-80	12	28	44.5	80
HSK100A-UM16-80	16	32	48	80
HSK100A-UM20-95	20	40	53	95
HSK100A-UM25-110	25	48	63	110
HSK100A-UM32-115	32	52	63	115

HSK



Boring Bar Blank

基础柄



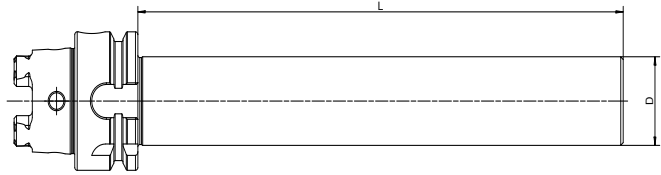
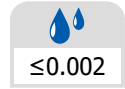
Size	D	L
HSK50A-D050-160	50	160
HSK50A-D065-200	65	200
HSK63A-D065-160	65	160
HSK63A-D065-210	65	210
HSK63A-D065-250	65	250
HSK63A-D065-300	65	300
HSK63A-D080-160	80	160
HSK63A-D080-210	80	210
HSK63A-D080-250	80	250
HSK63A-D080-300	80	300
HSK63A-D100-160	100	160
HSK63A-D100-210	100	210
HSK63A-D100-250	100	250
HSK63A-D100-300	100	300
HSK63A-D120-160	120	160
HSK63A-D120-210	120	210
HSK63A-D120-250	120	250
HSK63A-D120-300	120	300
HSK100A-D080-160	80	160
HSK100A-D080-210	80	210
HSK100A-D080-250	80	250
HSK100A-D080-300	80	300
HSK100A-D100-160	100	160
HSK100A-D100-210	100	210
HSK100A-D100-250	100	250
HSK100A-D100-300	100	300
HSK100A-D120-160	120	160
HSK100A-D120-210	120	210
HSK100A-D120-250	120	250
HSK100A-D120-300	120	300

Other sizes can be made by request.

Usage: used for special tools; taper and flange are hardened and grinded, soft blank side for later processing.



Test Arbor
主轴检测棒

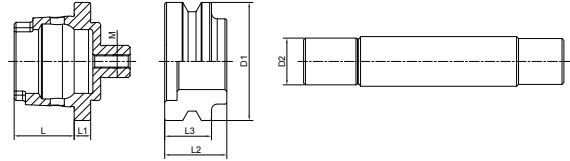


Size	D	L
HSK50A-32-200	32	200
HSK63A-40-300	40	300
HSK80A-50-300	50	300
HSK100A-50-300	50	300

HSK



Alignment Tool for ATC Arm 调整机械手用组合模具



Size	D1	D2	L	L1	L2	L3	M
HSK50A-ATC-25D	50	25	25	8	22	18	M6
HSK63A-ATC-30D	63	30	32	8	30	18	M8
HSK80A-ATC-35D	80	35	40	8	36	18	M10
HSK100A-ATC-40D	100	40	50	10	45	19	M10

Usage:

- 1) Put the Taper to the machine Spindle
- 2) Install flange to the ATC arm
- 3) Insert Pin into the flange
- 4) Adjust ATC arm and make sure the pin front part into the flange completely

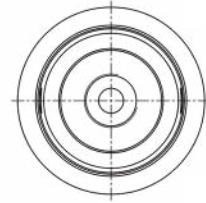
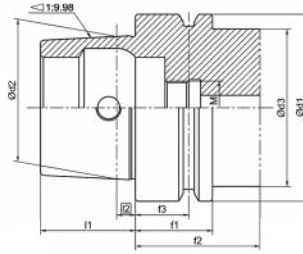


TOOL HOLDERS

HSK-E

HSK-E Taper Standard

HSK-E 锥柄标准



Size	d1	d2	d3	l1	l2	f1	f2	f3
HSK20E	20	15.203	16	10	2	8	16	3.5
HSK25E	25	19.006	20	13	2.5	10	20	4.5
HSK32E	32	24.007	26	16	3.2	20	35	16
HSK40E	40	30.007	34	20	4	20	35	16
HSK50E	50	38.009	42	25	5	26	42	18
HSK63E	63	48.010	53	32	6.3	26	42	18

Taper standard: DIN 69893; ISO 12164

Material: Alloyed case hardened steel

Surface Treatment: Blackening and Bright

Taper tolerance: <AT3

Hardness: HRC 58-62

Carbon depth: 0.8±0.2mm

Surface Roughness: Ra<0.005mm

Balancing: G6.3/15000; G2.5/25000

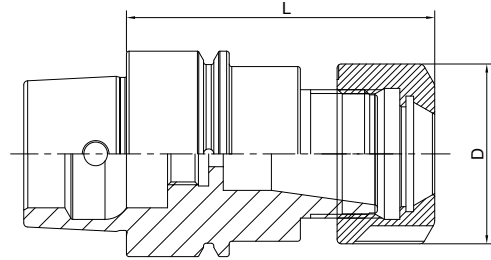
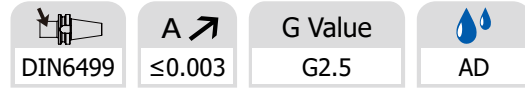
HSK-E TOOLING SYSTEM HSK-E 工具系统目录

ER Collet Chuck.....	D.44
ER 弹簧夹头刀柄.....	D.44
ER Collet Chuck.....	D.45
ER 弹簧夹头刀柄.....	D.45
Face Mill Holder.....	D.46
面铣刀柄.....	D.46
End Mill Holder.....	D.48
侧固刀柄.....	D.48
Precision Drill Chuck Holder.....	D.49
精密钻夹头刀柄.....	D.49



HSK

ER Collet Chuck ER 弹簧夹头刀柄



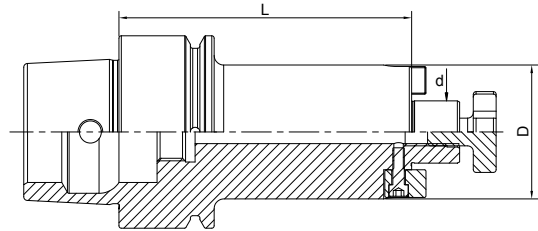
Size	D	L	Capacity
HSK32E-ER11M-60	16	60	1-7
HSK32E-ER16M-60	22	60	1-10
HSK32E-ER20M-60	28	60	1-13
HSK32E-ER16A-60	28	60	1-10
HSK32E-ER20A-60	34	60	1-13
HSK40E-ER16A-60	28	60	1-10
HSK40E-ER20A-60	34	60	1-13
HSK40E-ER25-75	42	75	2-16
HSK40E-ER32-70	50	70	2-20
HSK50E-ER16A-80	28	80	1-10
HSK50E-ER25-80	42	80	2-16
HSK50E-ER32-85	50	85	2-20
HSK50E-ER40-100	63	100	3-26
HSK63E-ER16A-75	28	75	1-10
HSK63E-ER25-80	42	80	2-16
HSK63E-ER32-90	50	90	2-20
HSK63E-ER40-120	63	120	3-26



Face Mill Holder
面铣刀柄



DIN6499	A ≤ 0.005	G Value G2.5	AD
---------	----------------	--------------	----

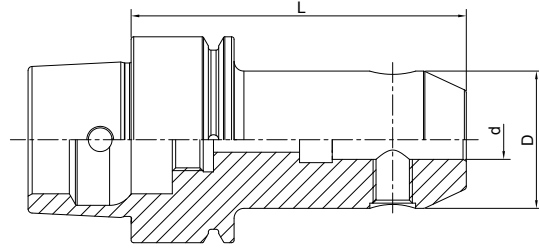
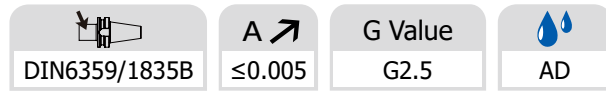


Size	d	D	L1
HSK32E-FMB16-50	16	38	50
HSK40E-FMB16-50	16	38	50
HSK40E-FMB22-50	22	48	50
HSK40E-FMB27-55	27	58	55
HSK50E-FMB16-50	16	38	50
HSK50E-FMB22-60	22	48	60
HSK50E-FMB27-60	27	58	60
HSK50E-FMB32-60	32	78	60
HSK63E-FMB16-50	16	38	50
HSK63E-FMB22-60	22	48	60
HSK63E-FMB27-60	27	58	60
HSK63E-FMB32-60	32	78	60
HSK63E-FMB40-60	40	88	60

HSK



End Mill Holder Weldon 侧固刀柄

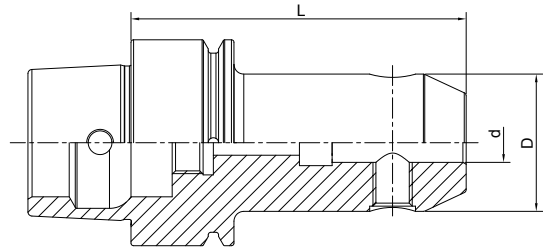


Size	d	D	L
HSK32E-SLA06-60	6	25	60
HSK32E-SLA08-60	8	28	60
HSK32E-SLA10-65	10	35	65
HSK40E-SLA06-60	6	25	60
HSK40E-SLA08-60	8	28	60
HSK40E-SLA10-60	10	35	60
HSK40E-SLA12-70	12	42	70
HSK40E-SLA14-75	14	44	75
HSK40E-SLA16-75	16	48	75
HSK40E-SLA20-75	20	52	75
HSK50E-SLA06-65	6	25	65
HSK50E-SLA08-65	8	28	65
HSK50E-SLA10-65	10	35	65
HSK50E-SLA12-80	12	42	80
HSK50E-SLA14-80	14	44	80
HSK50E-SLA16-80	16	48	80
HSK50E-SLA18-80	18	50	80
HSK50E-SLA20-80	20	52	80
HSK50E-SLA20-100	20	52	100
HSK50E-SLA25-102	25	65	102



End Mill Holder Weldon
侧固刀柄

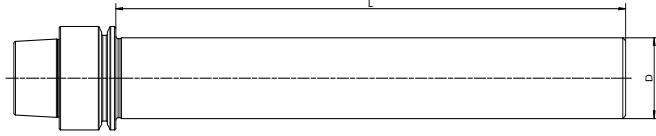
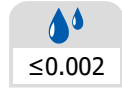
DIN6359/1835B	A ↗ ≤0.005	G Value G2.5	AD
----------------------	----------------------	------------------------	-----------



Size	d	D	L
HSK63E-SLA06-65	6	25	65
HSK63E-SLA08-65	8	28	65
HSK63E-SLA10-65	10	35	65
HSK63E-SLA12-80	12	42	80
HSK63E-SLA14-80	14	44	80
HSK63E-SLA16-80	16	48	80
HSK63E-SLA18-80	18	50	80
HSK63E-SLA20-80	20	52	80
HSK63E-SLA25-110	25	65	110
HSK63E-SLA32-110	32	72	110
HSK63E-SLA40-120	40	80	120

HSK



Test Arbor
主轴检测棒


Size	D	L
HSK25E-20-150	20	150
HSK32E-25-180	25	180
HSK40E-25-180	25	180
HSK50E-32-200	32	200

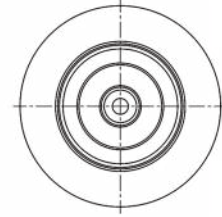
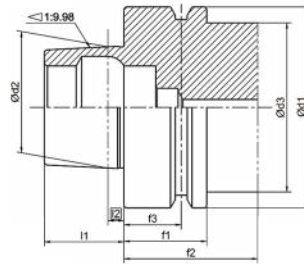
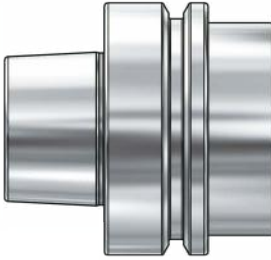


TOOL HOLDERS

HSK-F

HSK-F Taper Standard

HSK-F 锥柄标准



Size	d1	d2	d3	l1	l2	f1	f2	f3
HSK50F	50	30.007	42	20	4	26	42	18
HSK63F	63	38.009	53	25	5	26	42	18
HSK80F	80	48.010	68	32	6.3	26	42	18

Taper standard: DIN 69893; ISO 12164

Material: Alloyed case hardened steel

Surface Treatment: Blackening and Bright

Taper tolerance: <AT3

Hardness: HRC 58-62

Carbon depth: 0.8±0.2mm

Surface Roughness: Ra<0.005mm

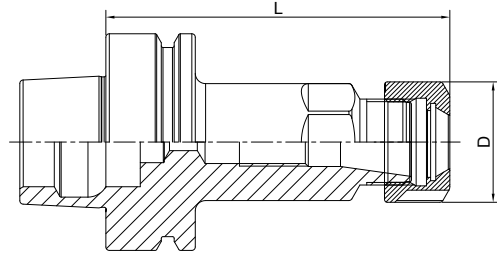
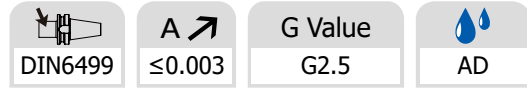
Balancing: G6.3/15000; G2.5/25000

HSK-F TOOLING SYSTEM HSK-F 工具系统目录

ER Collet Chuck.....	D.54
ER 弹簧夹头刀柄.....	D.54
OZ Collet Chuck.....	D.55
OZ 夹头刀柄.....	D.55
Face Mill Holder.....	D.56
面铣刀柄.....	D.56
End Mill Holder.....	D.57
侧固刀柄.....	D.57
Morse Taper Adapter.....	D.58
带扁尾莫氏刀柄.....	D.58
Boring Bar Blank.....	D.59
基础柄.....	D.59
Precision Drill Chuck Holder.....	D.60
精密钻夹头刀柄.....	D.60
Test Arbor.....	D.61
主轴检测棒.....	D.61



ER Collet Chuck ER 弹簧夹头刀柄



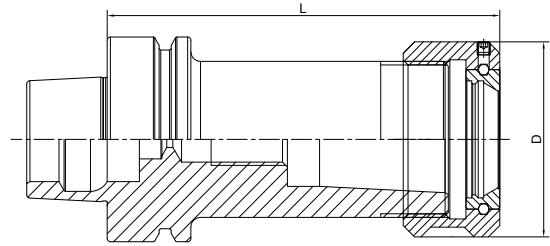
Size	D	L	Capacity
HSK40F-ER16A-60	28	60	1-10
HSK40F-ER25-60	42	60	2-16
HSK50F-ER25-70	42	70	2-16
HSK50F-ER32-80	50	80	2-20
HSK50F-ER40-80	63	80	3-26
HSK63F-ER16A-60	28	60	1-10
HSK63F-ER25-70	42	70	2-16
HSK63F-ER32-75	50	75	2-20
HSK63F-ER40-80	63	80	3-26
HSK63F-ER16A-100	28	100	1-10
HSK63F-ER25-100	42	100	2-16
HSK63F-ER32-100	50	100	2-20
HSK63F-ER40-100	63	100	3-26

HSK


OZ Collet Chuck
OZ 夹头刀柄



DIN6391	A ≤ 0.005	G Value G2.5	AD
---------	----------------	--------------	----



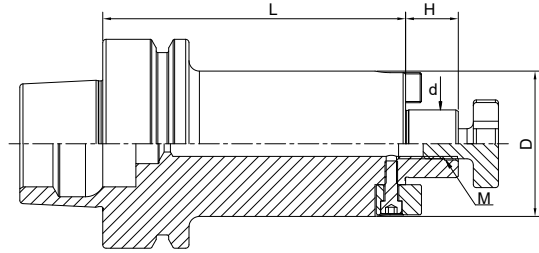
Size	D	L	Capacity
HSK63F-OZ25-90	60	90	3-25

HSK



Face Mill Holder 面铣刀柄

DIN6357	A ≤ 0.005	G Value G2.5	AD
---------	----------------	--------------	----



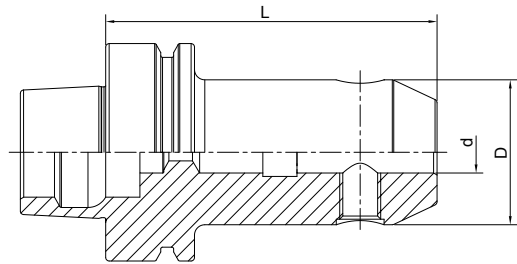
Size	d	D	L	H	M
HSK63F-FMB16-50	16	38	50	17	M8
HSK63F-FMB22-60	22	48	60	19	M10
HSK63F-FMB27-60	27	58	60	21	M12
HSK63F-FMB32-60	32	78	60	24	M16

HSK


End Mill Holder Weldon
侧固刀柄



 DIN6359/1835B	 A ↗ ≤0.005	 G Value G2.5	 AD
-------------------	-------------------	---------------------	--------

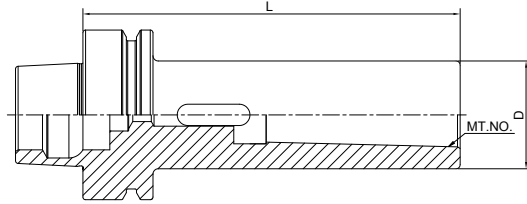
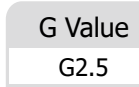


Size	d	D	L
HSK63F-SLA06-65	6	25	65
HSK63F-SLA08-65	8	28	65
HSK63F-SLA10-65	10	35	65
HSK63F-SLA12-80	12	42	80
HSK63F-SLA14-80	14	44	80
HSK63F-SLA16-80	16	48	80
HSK63F-SLA18-80	18	50	80
HSK63F-SLA20-80	20	52	80
HSK63F-SLA25-110	25	65	110
HSK63F-SLA32-110	32	72	110

HSK



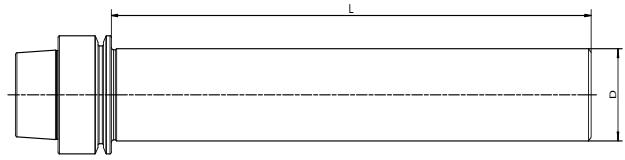
Morse Taper Adapter with Tang 带扁尾莫氏刀柄



Size	MT.NO.	D	L
HSK63F-MTA1-100	1	25	100
HSK63F-MTA2-120	2	32	120
HAK63F-MTA3-140	3	40	140
HAK63F-MTA4-160	4	48	160



Boring Bar Blank 基础柄



Size	D	L
HSK63F-65-160	65	160
HSK63F-65-250	65	250

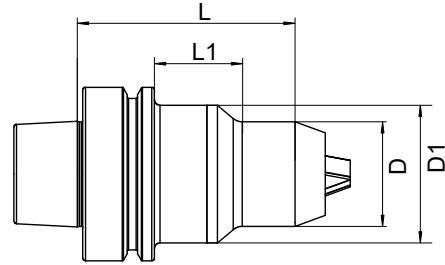
Other sizes can be made by request.



Precision Drill Chuck Holder

精密钻夹头刀柄


A ↗ ≤0.03	G Value G2.5	AD
--------------	-----------------	----

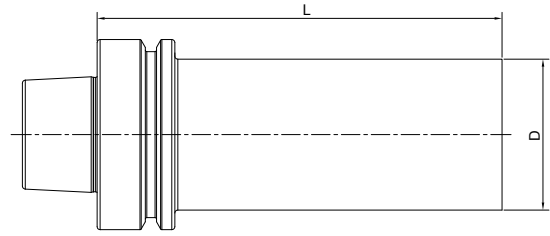


Size	D	D1	L	L1	Capacity
HSK63F-CPU10-90	38	50	90	32	1-10
HSK63F-CPU13-100	50	-	100	-	1-13
HSK63F-CPU16-100	50	-	100	-	1-16

HSK


Test Arbor
主轴检测棒


≤0.002



Size	D	L
HSK63F-40-300	40	300

HSK

